

BD 91 - Maxima collection

design Bartoli Design



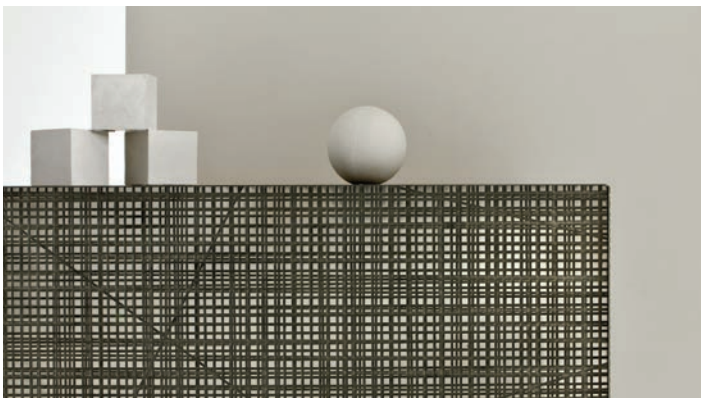
Wooden sideboard with carved doors and sides completely covered with "Liquid Metal" finish and wooden or marble upper top. Internal structure divided in two parts equipped with two internal drawers that can be completely pulled out. It is available with hinged doors or flap doors and raised on wooden legs or hanging.

Credenza in legno con fianchi e ante scolpite, con finitura "Metallo Liquido" e top in legno o marmo. Internamente dotata di due cassetti completamente estraibili. E' disponibile con ante battenti o a ribalta e sollevata su gambe in legno oppure sospesa.



BD 91 - Maxima collection

design Bartoli Design

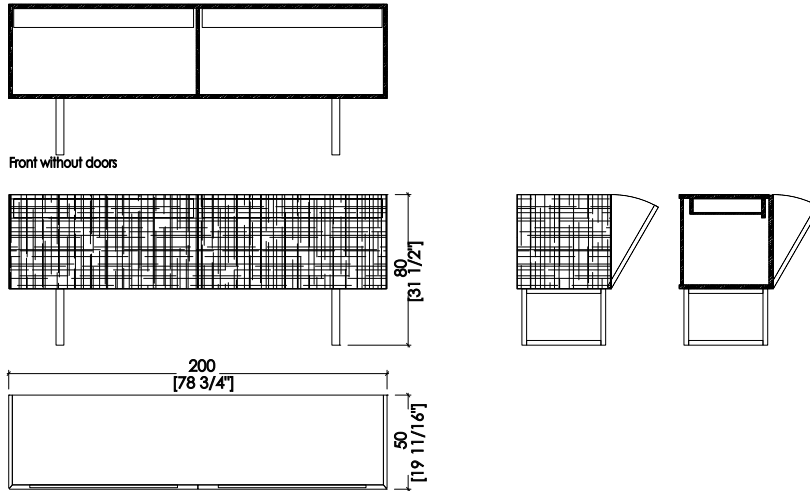


One of the masterpiece of Maxima collection, this sideboard respects Laurameroni philosophy and care for details, especially in the surface decoration, turning the most linear and simple shapes into works of artistic skillful craftsmanship.

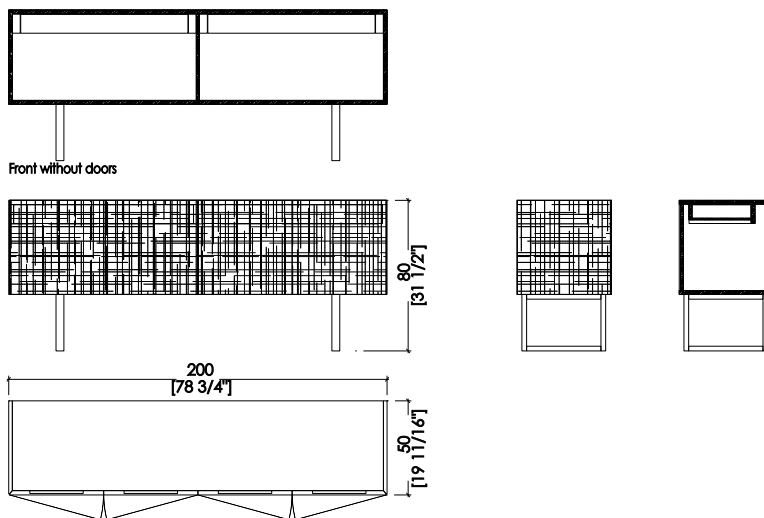
Uno dei pezzi principali della collezione Maxima, questa credenza rispetta la filosofia di Laurameroni e l'usuale attenzione ai dettagli, in particolare nella lavorazione delle superfici, trasformando così le forme più semplici e lineari in lavori di abile artigianato artistico.

\_dimensions

**BD 91** sideboard with flap doors - credenza con ante a ribalta -  
anrichte mit Klapptüren - buffet avec portes abattantes -  
Креденца с откидными дверцами



**BD 93** sideboard with hinged doors - credenza con ante a  
battente - anrichte mit flügeltüren - buffet avec portes battantes -  
Креденца с распашными дверцами



Dimensions in centimeters and inches.

The right to discontinue and make changes is reserved.

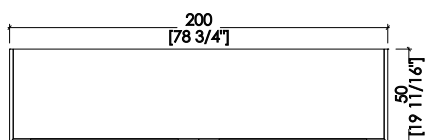
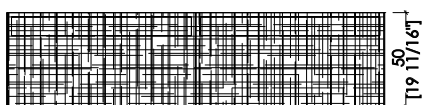
This information is based on the latest product information available at the time of printing.

\_dimensions

**BD 92** sideboard with flap doors - credenza con ante a ribalta -  
anrichte mit Klapptüren - buffet avec portes abattantes -  
Креденца с откидными дверцами



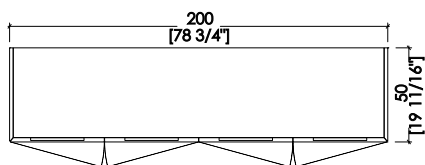
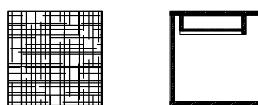
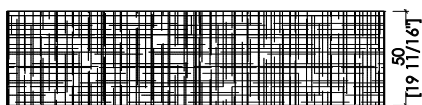
Front without doors



**BD 94** sideboard with hinged doors - credenza con ante a  
battente - anrichte mit flügeltüren - buffet avec portes battantes -  
Креденца с распашными дверцами



Front without doors



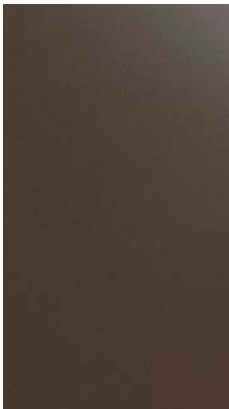
Dimensions in centimeters and inches.

The right to discontinue and make changes is reserved.

This information is based on the latest product information available at the time of printing.

\_materials & finishes for the top

liquid metal



Crystal  
Bronze laquered



Crystal  
Tin laquered



Crystal  
Gold laquered

\_materials & finishes for the top

marbles



Gris Vignè levigato



Pietra di Fossena

\_The finishes shown are indicative and refer to the entire production range.  
Laurameroni reserves the right to modify the range without warning.

\_materials & finishes

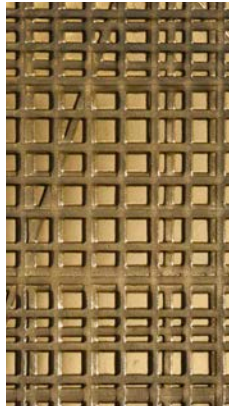
maxima carving liquid metal



"Maxima" Light Bronze



"Maxima" Tin



"Maxima" Gold 9K

\_The finishes shown are indicative and refer to the entire production range.  
Laurameroni reserves the right to modify the range without warning.

\_maintenance

**LIQUID METALS**

The surface is specially handcrafted in several complex manufacturing steps. The structure of the furniture/panel is coated with metal powder liquified at low temperature and applied on the surface. At the end of the manufacturing procedure, the surface is painted with a transparent protective lacquer which prevents further oxidising and discolouring. Differences in colour and structure are not faults, but typical of the goods, and are characteristics of manual processing: every piece is unique. Do not use any acid, solvents or alkali-based cleaners. Do not use scouring agents, steel wool, pot cleaners or similar. Pointed or sharp objects, such as blades or knives, can damage the surface. Anything hot or damp can also be detrimental to the surface. Remove light soiling with a soft cloth and a neutral household cleaning product diluted in water. Clean the liquid metal coated parts with cold or hand-hot water and finish by immediately drying with a soft cloth.

La superficie è appositamente realizzata a mano in diverse fasi di produzione complesse. La struttura del mobile / pannello è rivestita con polvere metallica liquefatta a bassa temperatura e applicata sulla superficie. Alla fine del processo di fabbricazione, la superficie viene verniciata con una vernice protettiva trasparente che impedisce ulteriore ossidazione e scolorimento. Le differenze di colore e struttura non sono difetti, ma tipici dei prodotti e sono caratteristiche della lavorazione manuale: ogni pezzo è unico. Non utilizzare detergenti acidi, solventi o alcali. Non usare agenti abrasivi, lana d'acciaio, detergenti per pentole o simili. Oggetti appuntiti o taglienti, come lame o coltelli, possono danneggiare la superficie. Qualsiasi cosa calda o umida può anche essere dannosa per la superficie. Rimuovere lo sporco leggero con un panno morbido e un prodotto per la pulizia neutro della casa diluito in acqua. Pulire le parti rivestite di metallo liquido con acqua fredda o calda a mano e finire asciugando immediatamente con un panno morbido.

**BEDIF  
FEREN  
TBEUN  
IQUE.**

LAURAMERONI s.r.l.  
22040 Alzate Brianza (Como)  
Via Manzoni, 2784  
T +39 031 761450  
info@laurameroni.com  
www.laurameroni.com