

BD 95 - Maxima Collection

design Bartoli Design

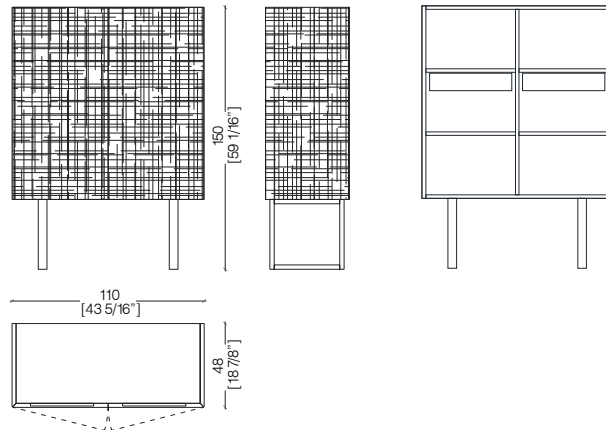


Wooden sideboard with 2 carved hinged doors and carved sides. Equipped with 2 internal drawers and 4 shelves. This sideboard can be made in all woods of the collection and in special dimensions. Inside in walnut "Canaletto" and outside totally covered with "Liquid Metal" finish.

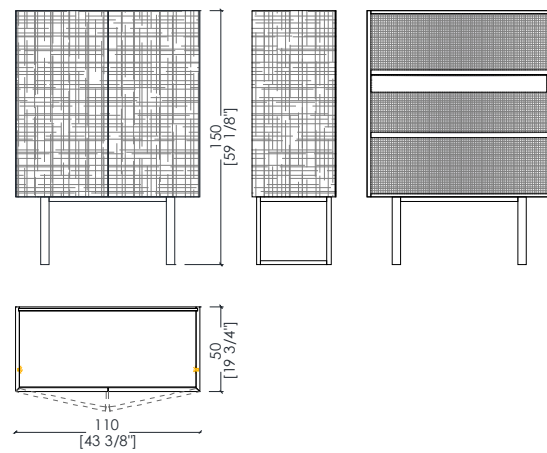
Credenza in legno con due ante e fianchi in legno scolpito. Dotata di 2 cassetti interni e di 4 ripiani. La credenza può essere realizzata in tutti i legni della collezione e in dimensioni speciali. Interno in noce Canaletto ed esterno totalmente con finitura "Metallo Liquido".

_dimensions

BD 95 sideboard with 2 hinged doors - credenza con 2 ante a battente -
anrichte mit 2 Flügeltüren - buffet avec 2 portes battantes -
Креденца с 2-мя распашными дверцами



BD 31 sideboard with 2 hinged doors - credenza con 2 ante a battente -
anrichte mit 2 Flügeltüren - buffet avec 2 portes battantes -
Креденца с 2-мя распашными дверцами



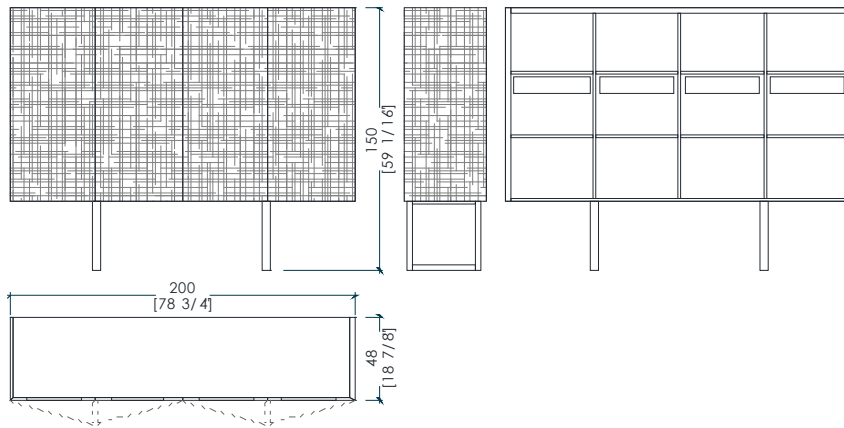
-Dimensions in centimeters and inches.

The right to discontinue and make changes is reserved.

This information is based on the latest product information available at the time of printing.

_dimensions

BD 26 sideboard with 4 hinged doors - credenza con 4 ante a battente -
anrichte mit 4 Flügeltüren - buffet avec 4 portes battantes -
Креденца с 4-мя распашными дверцами



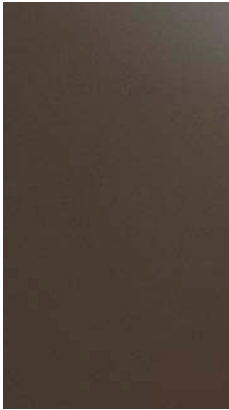
-Dimensions in centimeters and inches.

The right to discontinue and make changes is reserved.

This information is based on the latest product information available at the time of printing.

_materials & finishes for the top

liquid metal



Liquid metal
Bronze



Liquid metal
Tin



Liquid metal
Gold

_materials & finishes for interiors

plain woods



Canaletto Walnut

_The finishes shown are indicative and refer to the entire production range.
Laurameroni reserves the right to modify the range without warning.

_ materials & finishes for the doors

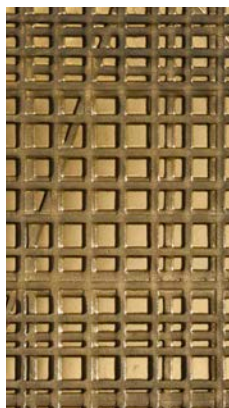
maxima carving liquid metal



"Maxima" Light Bronze



"Maxima" Tin



"Maxima" Gold 9K

_ The finishes shown are indicative and refer to the entire production range.
Laurameroni reserves the right to modify the range without warning.

_maintenance

LIQUID METALS

The surface is specially handcrafted in several complex manufacturing steps. The structure of the furniture/panel is coated with metal powder liquified at low temperature and applied on the surface. At the end of the manufacturing procedure, the surface is painted with a transparent protective lacquer which prevents further oxidising and discolouring. Differences in colour and structure are not faults, but typical of the goods, and are characteristics of manual processing: every piece is unique. Do not use any acid, solvents or alkali-based cleaners. Do not use scouring agents, steel wool, pot cleaners or similar. Pointed or sharp objects, such as blades or knives, can damage the surface. Anything hot or damp can also be detrimental to the surface. Remove light soiling with a soft cloth and a neutral household cleaning product diluted in water. Clean the liquid metal coated parts with cold or hand-hot water and finish by immediately drying with a soft cloth.

La superficie è appositamente realizzata a mano in diverse fasi di produzione complesse. La struttura del mobile / pannello è rivestita con polvere metallica liquefatta a bassa temperatura e applicata sulla superficie. Alla fine del processo di fabbricazione, la superficie viene verniciata con una vernice protettiva trasparente che impedisce ulteriore ossidazione e scolorimento. Le differenze di colore e struttura non sono difetti, ma tipici dei prodotti e sono caratteristiche della lavorazione manuale: ogni pezzo è unico. Non utilizzare detergenti acidi, solventi o alcali. Non usare agenti abrasivi, lana d'acciaio, detergenti per pentole o simili. Oggetti appuntiti o taglienti, come lame o coltelli, possono danneggiare la superficie. Qualsiasi cosa calda o umida può anche essere dannosa per la superficie. Rimuovere lo sporco leggero con un panno morbido e un prodotto per la pulizia neutro della casa diluito in acqua. Pulire le parti rivestite di metallo liquido con acqua fredda o calda a mano e finire asciugando immediatamente con un panno morbido.

**BEDIF
FEREN
TBEUN
IQUE.**

LAURAMERONI s.r.l.
22040 Alzate Brianza (Como)
Via Manzoni, 2784
T +39 031 761450
info@laurameroni.com
www.laurameroni.com