

## Boiserie Frame - Frame collection

design Laurameroni



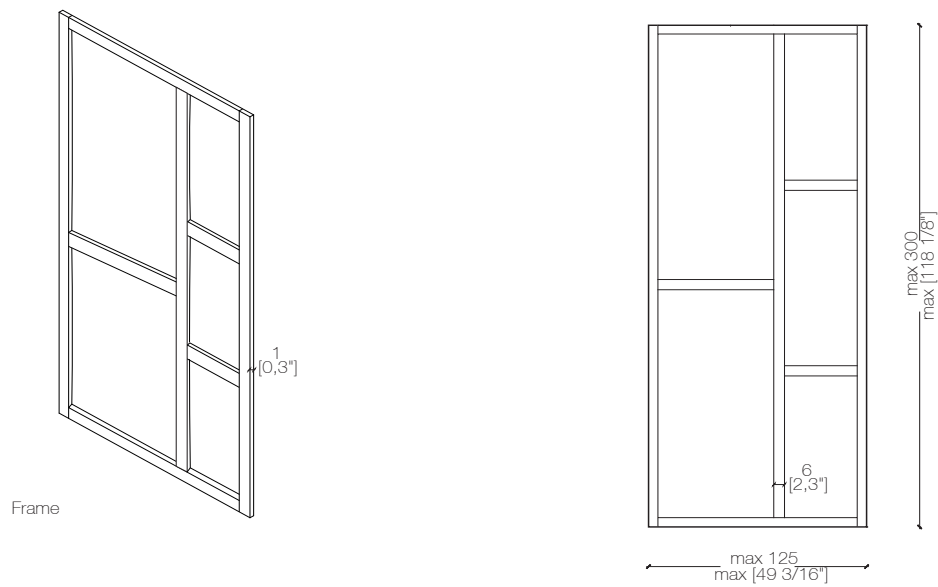
The Frame collection revisits classic frame wall panels by exploiting their modular and technical qualities and modernizing their design. The result is modules of customizable dimensions perfect for accommodating all the finishes of the Laurameroni collection.

La collezione Frame rivisita le classiche boiserie a telaio sfruttandone le qualità modulari e tecniche, e modernizzandone il design. Il risultato sono moduli di dimensioni personalizzabili perfetti per accogliere tutte le finiture della collezione Laurameroni.



\_dimensions

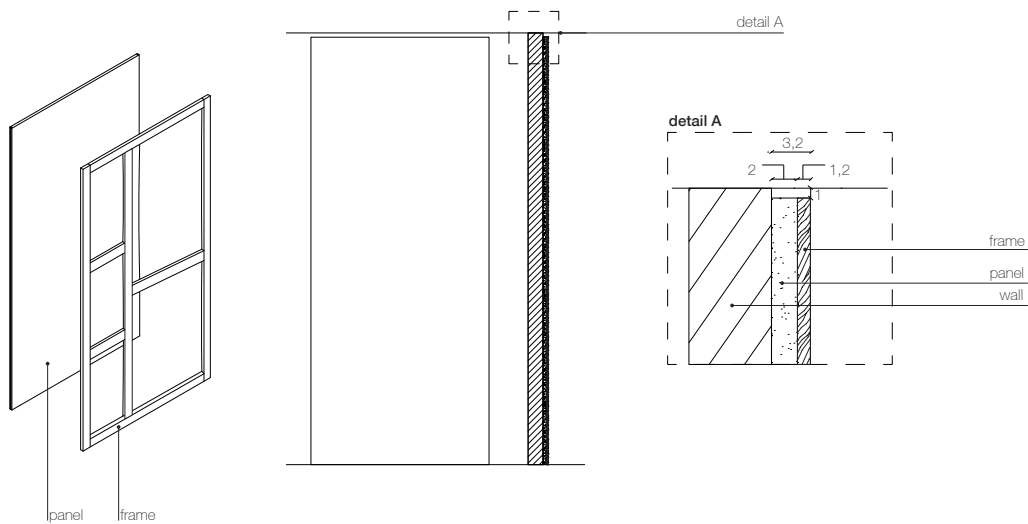
**wall panel** - pannello boiserie -  
wandpaneel - panneau boiserie - Стеновая панель



-Dimensions in centimeters and inches.  
The right to discontinue and make changes is reserved.  
This information is based on the latest product information available at the time of printing.

\_dimensions limits

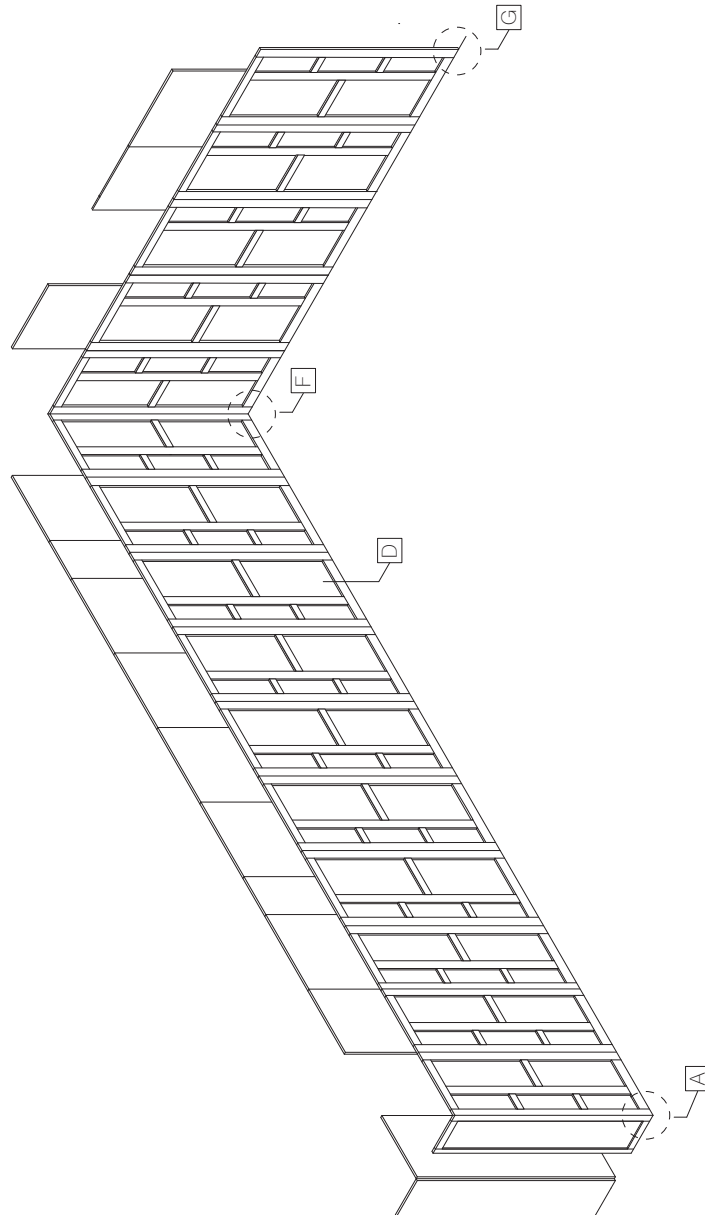
**wall panel** - pannello boiserie -  
wandpaneel - panneau boiserie - Стеновая панель



-Dimensions in centimeters and inches.  
The right to discontinue and make changes is reserved.  
This information is based on the latest product information available at the time of printing.

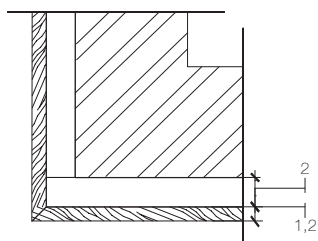
\_dimensions

**wall panel system with hinged doors** - sistema boiserie con porte battenti  
wandpaneel system mit flügeltüren - système boiserie avec portes  
battantes - система стеновых панелей с распашными дверями

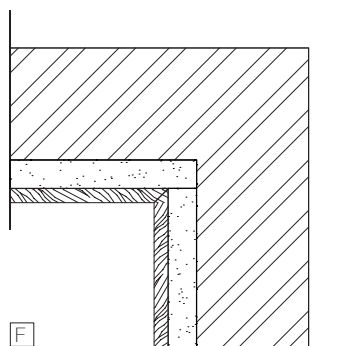


-Dimensions in centimeters and inches.  
The right to discontinue and make changes is reserved.  
This information is based on the latest product information available at the time of printing.

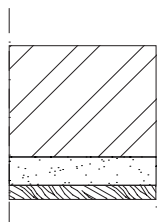
\_dimensions



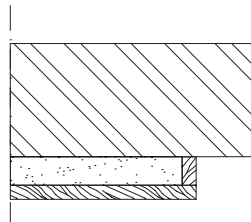
A



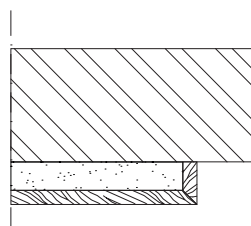
F



D



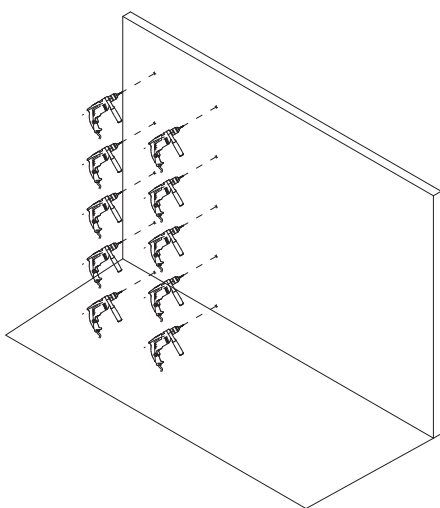
G



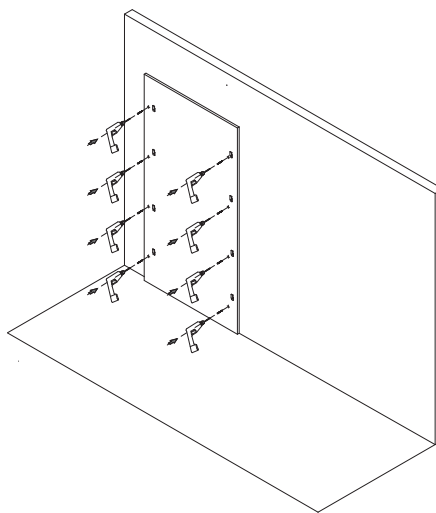
G

-Dimensions in centimeters and inches.  
The right to discontinue and make changes is reserved.  
This information is based on the latest product information available at the time of printing.

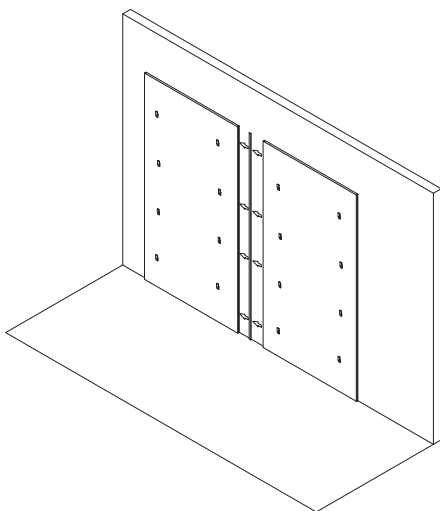
\_assembly



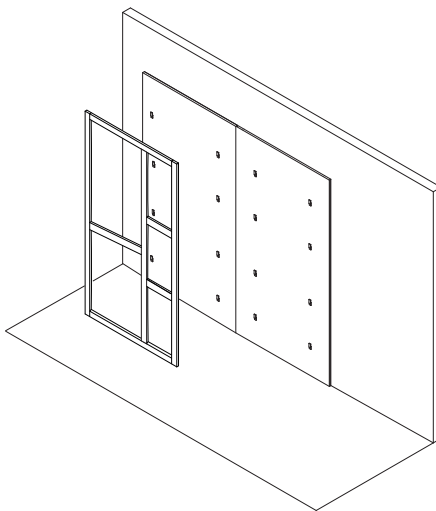
**1** Drill the wall. Insert in the wall the plugs suitable for the existent wall.



**2** Screw the pre-drilled boiserie panel to the wall

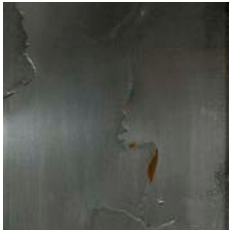


**3** Place the alignment band into the proper milling on the panel. Place the second panel mortising it, through the proper milling, with the first one, already fixed to the wall.

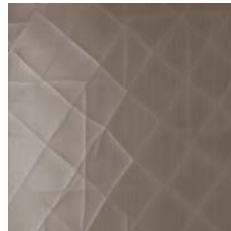


**4** Paste the Frame on the panels.

\_frame collection variants  
see all finishes in the next pages



Space Panel - Liquid Metal Frame



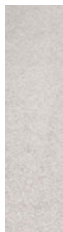
Rift Panel - Gommalacca Frame



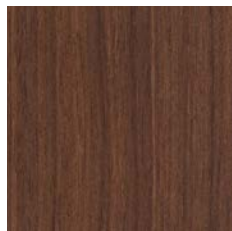
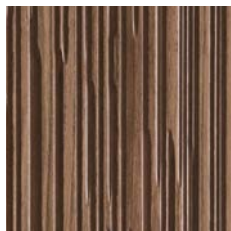
Unlimited Panel - Liquid Metal Frame



Juta Panel - Liquid Metal Frame



Onda Panel - Plain or Lacquered wood Frame

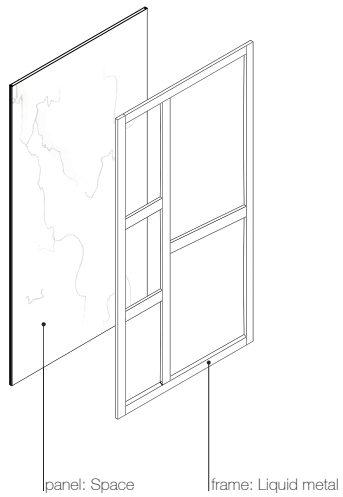


Maxima Panel

Decor Panel

Plain Panel - Maxima, Decor, Plain or Lacquered wood Frame

\_space collection





\_materials & finishes for the panel

space



Space

\_frame materials and finishes for the space panel

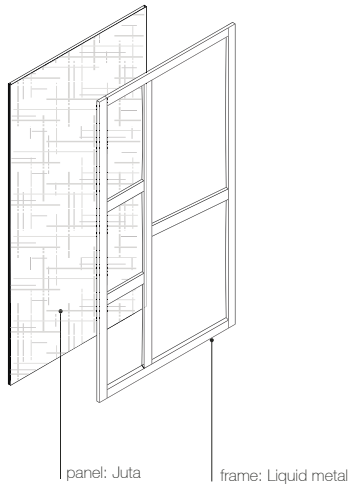
liquid metal



Liquid Metal Tin

**\_The finishes shown are indicative and refer to the entire production range.  
Laurameroni reserves the right to modify the range without warning.**

\_juta collection



\_materials & finishes for the panel

juta



Juta Bronze



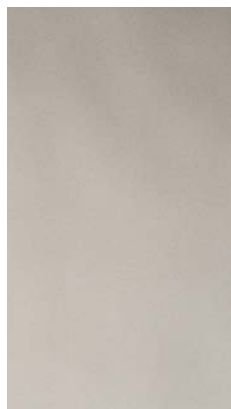
Juta Tin

\_frame materials and finishes for the juta panel

liquid metal



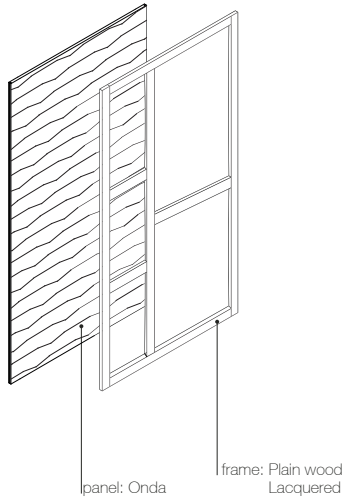
Liquid metal Bronze



Liquid Metal Tin

**\_The finishes shown are indicative and refer to the entire production range.  
Laurameroni reserves the right to modify the range without warning.**

\_onda collection



\_materials & finishes for the panel  
onda



Maple



Oak



Teak



Walnut Canaletto



Rosewood



Wenge



Mahogany



Aniline RAL 9016

\_The finishes shown are indicative and refer to the entire production range.  
Laurameroni reserves the right to modify the range without warning.

\_frame materials and finishes for the onda panel

plain wood



Maple



Oak



Teak



Canaletto



Dyed canaletto



Wenge



Mahogany



Zebrano



Rosewood



Ebony



OakTermocotto

\_The finishes shown are indicative and refer to the entire production range.  
Laurameroni reserves the right to modify the range without warning.

\_frame materials and finishes for the onda panel

lacquering



Brushed matt Lacquering



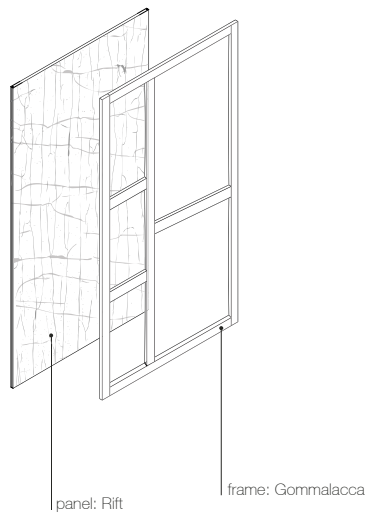
Warm Gray



Available in all  
RAL / NCS colors

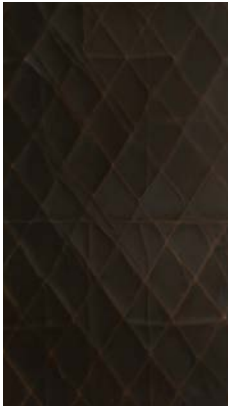
\_The finishes shown are indicative and refer to the entire production range.  
Laurameroni reserves the right to modify the range without warning.

\_rift collection





\_materials & finishes for the panel  
rift



Brown



Grey



Mist



Red

\_frame materials and finishes for the rift panel  
gommalacca



Grey



Mist

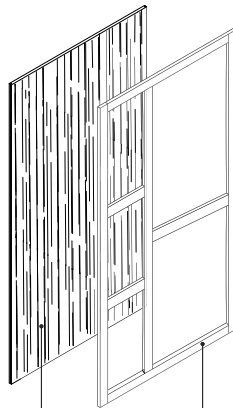
\_The finishes shown are indicative and refer to the entire production range.  
Laurameroni reserves the right to modify the range without warning.

\_maxima-decor-plain collection



panel: Plain

frame: Maxima  
Decor  
Liquid metal  
Lacquered  
Plain wood



panel: Decor

frame: Maxima  
Decor  
Liquid metal  
Lacquered  
Plain wood



panel: Maxima

frame: Maxima  
Decor  
Liquid metal  
Lacquered  
Plain wood

\_materials & finishes for the panel

maxima



Wenge



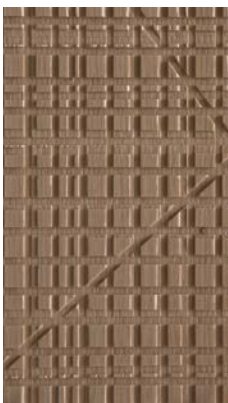
Canaletto walnut



Mahogany



Maple



Oak



Rosewood



Teak



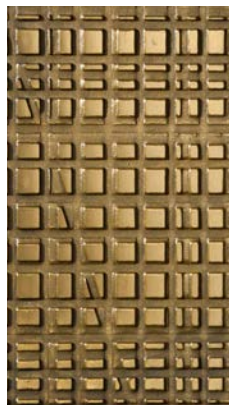
Anilina available in all  
RAL / NCS colors



Bronze



Copper



Gold



Tin

\_The finishes shown are indicative and refer to the entire production range.  
Laurameroni reserves the right to modify the range without warning.

\_materials & finishes for the panel  
decor



Wenge



Canaletto walnut



Mahogany



Maple



Oak



Rosewood



Teak



Anilina available in all  
RAL / NCS colors



Bronze



Copper



Gold



Tin

\_The finishes shown are indicative and refer to the entire production range.  
Laurameroni reserves the right to modify the range without warning.

\_materials & finishes for the door panel  
plain



Maple



Oak



Teak



Canaletto



Dyed canaletto



Wenge



Mahogany



Zebrano



Rosewood



Ebony



OakTermocotto

\_The finishes shown are indicative and refer to the entire production range.  
Laurameroni reserves the right to modify the range without warning.

\_frame materials and finishes for the maxima decor and plain panel  
decor finish



Wenge



Canaletto walnut



Mahogany



Maple



Oak



Rosewood



Teak



Anilina available in all  
RAL / NCS colors



Bronze



Copper



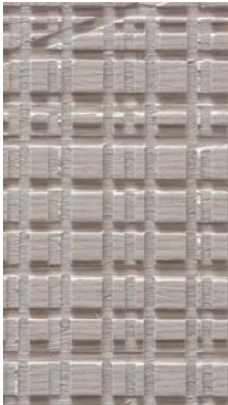
Gold



Tin

\_The finishes shown are indicative and refer to the entire production range.  
Laurameroni reserves the right to modify the range without warning.

\_frame materials and finishes for the maxima decor and plain panel  
maxima finish



Aniline



Canaletto walnut



Mahogany



Maple



Oak



Rosewood



Teak



Wenge



Bronze



Copper



Gold



Tin

\_The finishes shown are indicative and refer to the entire production range.  
Laurameroni reserves the right to modify the range without warning.

\_frame materials and finishes for the maxima decor and plain panel  
plain wood



Zebrano



Canaletto walnut



Mahogany



Maple



Oak



Rosewood



Teak



Wenge



Dyed Canaletto



Ebony



Termocotto

\_The finishes shown are indicative and refer to the entire production range.  
Laurameroni reserves the right to modify the range without warning.



\_frame materials and finishes for the maxima decor and plain panel  
lacquering



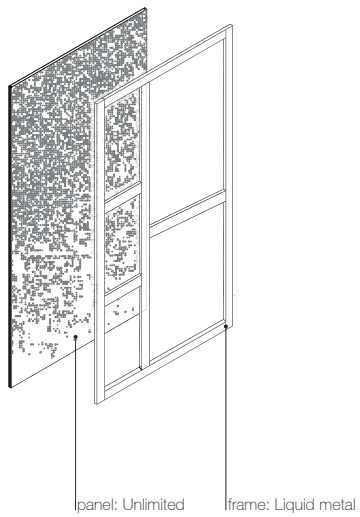
Brushed matt lacquered



Available in all  
RAL / NCS colors

\_The finishes shown are indicative and refer to the entire production range.  
Laurameroni reserves the right to modify the range without warning.

\_unlimited collection



\_materials & finishes for the panel  
unlimited



Bronze

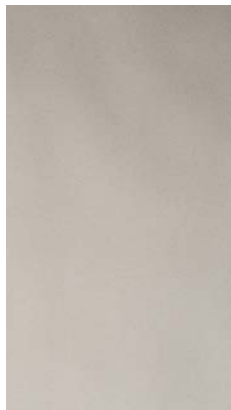


Tin

\_frame materials & finishes for the unlimited panel  
liquid metal



Liquid metal Bronze



Liquid Metal Tin

**The finishes shown are indicative and refer to the entire production range.  
Laurameroni reserves the right to modify the range without warning.**

\_maintenance

#### **\_WOOD**

To maintain the natural wood features and protect them from mechanical and chemical wear, the veneered surfaces are coated with a high-quality transparent varnish. Do not use acid or alkaline detergents, agents with bleaching additives, abrasive powders, steel wool, sponges or the like. Anything hot or humid can cause surface damage. Remove dirt and liquids immediately.

For the cleaning and care, it is best to use a soft, dry cloth. If necessary, the cloth can be slightly dampened and dipped in neutral detergent thoroughly diluted in water. The cloth should only be slightly damp to avoid discoloration or swelling of the surface. Finally, it is essential to gently rub dry surfaces, so that there is no residual moisture.

#### **\_LEGNO**

Per mantenere il carattere naturale del legno e proteggerlo dall'usura meccanica e chimica, le superfici impiallacciate sono rivestite con una vernice trasparente di alta qualità. Non usare detergenti acidi o alcalini, agenti con additivi sbiancanti, polveri abrasive, lana d'acciaio, spugne o simili. Qualsiasi cosa calda o umida può causare danni alla superficie. Rimuovere immediatamente sporco e liquidi. Per la pulizia e la cura, è preferibile utilizzare un panno morbido e asciutto. Eventualmente il panno può essere leggermente inumidito ed intinto in detergente neutro abbondantemente diluito in acqua. Il panno deve essere solo leggermente umido, per evitare scolorimenti o rigonfiamenti della superficie. È infine essenziale strofinare gentilmente le superfici asciutte, in modo che non sussista umidità residua.

\_maintenance

#### **METAL & LIQUID METAL**

To maintain the natural features of the metal and to protect the specific craftsmanship from oxidation and discoloration, the metal surfaces are coated with a high-quality transparent varnish. Do not use acid cleaners, solvents or alkalis. Do not use abrasive agents, steel wool, pot cleaners, glass cleaners, aggressive solvents, dyes, bleach or the like. Pointed or sharp objects, such as blades or knives, can cause damage to the surface. Anything hot or humid can cause surface damage.

For cleaning and care, remove light dirt with a soft cloth and a neutral household cleaning product well diluted in water. Gently clean the metal parts by hand with cold or warm water and dry immediately with a soft cloth.

#### **METALLO & METALLO LIQUIDO**

Per mantenere il carattere naturale del metallo e tutelare la specifica lavorazione artigianale da ossidazione e scolorimento, le superfici metalliche sono rivestite con una vernice trasparente di alta qualità.

Non utilizzare detergenti acidi, solventi o alcali. Non usare agenti abrasivi, lana d'acciaio, detergenti per pentole, detergenti per vetri, solventi aggressivi, coloranti, candeggina o simili. Oggetti appuntiti o taglienti, come lame o coltelli, possono causare danni alla superficie. Qualsiasi cosa calda o umida può causare danni alla superficie.

Per la pulizia e la cura, rimuovere lo sporco leggero con un panno morbido ed un prodotto neutro per la pulizia della casa abbondantemente diluito in acqua.

Pulire delicatamente a mano le parti metalliche con acqua fredda o tiepida ed asciugare immediatamente con un panno morbido.

\_maintenance

**PAINTS, LACQUERINGS AND  
SPECIAL FINISHES**

Do not use acid or alkaline detergents, agents with bleaching additives, abrasive powders, steel wool, sponges or the like. Do not use furniture polish or solvents to care for painted surfaces. Anything hot or humid can cause surface damage. Pointed or sharp objects, such as blades or knives, can cause damage to the surface. For the cleaning and care, regularly wipe the surfaces with a clean, soft, lint-free cloth to remove dust while avoiding abrasion. For soft-finish painted surfaces, use a soft, lint-free, slightly damp cloth. If heavily soiled, painted surfaces can be cleaned with a neutral, silicone-free detergent. Finally, it is essential to gently rub dry surfaces, so that there is no residual moisture.

**TINTE, LACCATURE E FINITURE  
SPECIALI**

Non usare detergenti acidi o alcalini, agenti con additivi sbiancanti, polveri abrasive, lana d'acciaio, spugne o simili. Non utilizzare lucidi per mobili o solventi per la cura delle superfici verniciate. Qualsiasi cosa calda o umida può causare danni alla superficie. Oggetti appuntiti o taglienti, come lame o coltelli, possono causare danni alla superficie.

Per la pulizia e la cura, pulire regolarmente le superfici con un panno pulito, morbido e privo di lanugine per rimuovere la polvere evitando l'abrasione. Per le superfici verniciate con finitura morbida, utilizzare un panno soffice, privo di lanugine e leggermente umido. Se molto sporche, le superfici verniciate possono essere pulite con un detergente neutro privo di silicone. È infine essenziale strofinare gentilmente le superfici asciutte, in modo che non sussista umidità residua.

**BEDIF  
FEREN  
TBEUN  
IQUE.**

LAURAMERONI s.r.l.  
22040 Alzate Brianza (Como)  
Via Manzoni, 2784  
T +39 031 761450  
info@laurameroni.com  
www.laurameroni.com