

Decor Acoustic - acoustic wall panels

design Bartoli Design



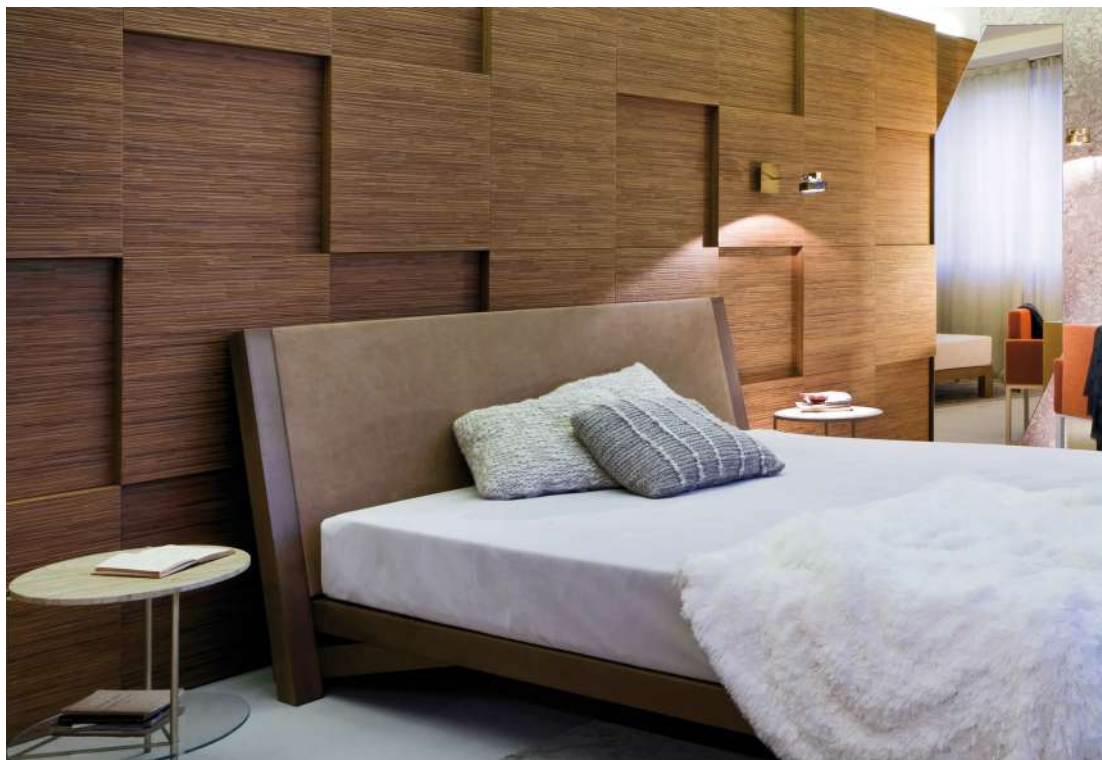
Wooden and textile soundproofing and sound absorbing wall claddings and doors with acoustic performances, designed by Bartoli Design for Laurameroni and engineered by Exhobo. Decor Acoustic is available in all woods of the collection with Decor carving or covered with fabric.

Pannelli acustici fonoassorbenti e fono impedenti in tessuto o legno, disegnati da Bartoli Design per Laurameroni e ingegnerizzati da Exhobo. La boiserie Decor Acoustic è disponibile in tutti i legni della collezione con scoltitura Decor o rivestita in tessuto.



Decor Acoustic - acoustic wall panels

design Bartoli Design



Aesthetic and acoustic solutions are tailor-made based on the detailed requirements specified by the customer and the architectural space that they will grace. These are provided by a consulting service, Decor.Acoustic Projects, that guides all engineering and assembly technical and architectural work. Decor.Acoustic integrates smoothly with a wide variety of boiseries, components and add-ons of the Decor portfolio, so as to enable the realisation of complete indoor environments both from an aesthetic and acoustic point of view.

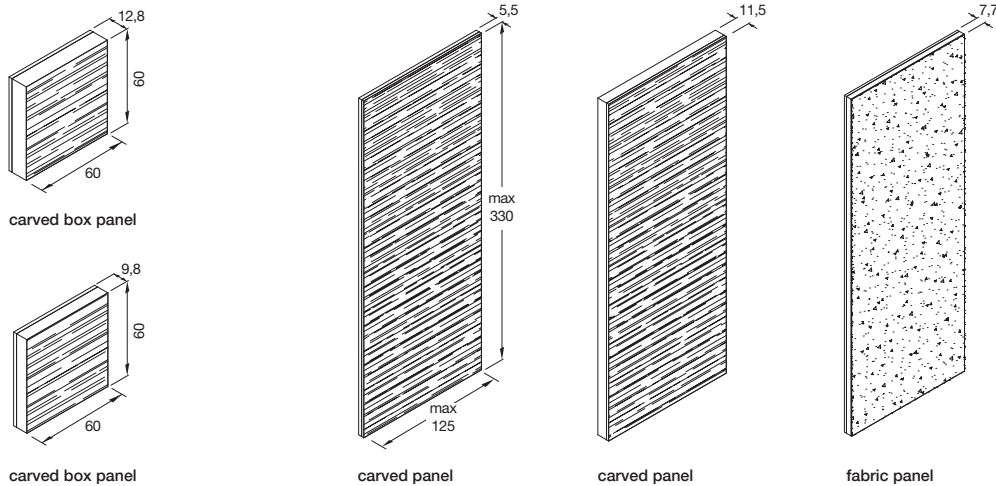
Le soluzioni estetiche e acustiche sono realizzate su misura in base ai requisiti dettagliati specificati dal cliente e allo spazio architettonico da arredare. Questi sono forniti da un servizio di consulenza, Decor Acoustic Projects, che guida tutti i lavori tecnici e architettonici di ingegneria e assemblaggio. Decor.Acoustic si integra senza problemi con un'ampia varietà di boiserie, componenti e componenti aggiuntivi della collezione Decor, in modo da consentire la realizzazione di ambienti interni completi sia dal punto di vista estetico che acustico.

acoustic wall panels

pannelli acustici - panneaux acoustique - Akustikpaneele - Акустические панели

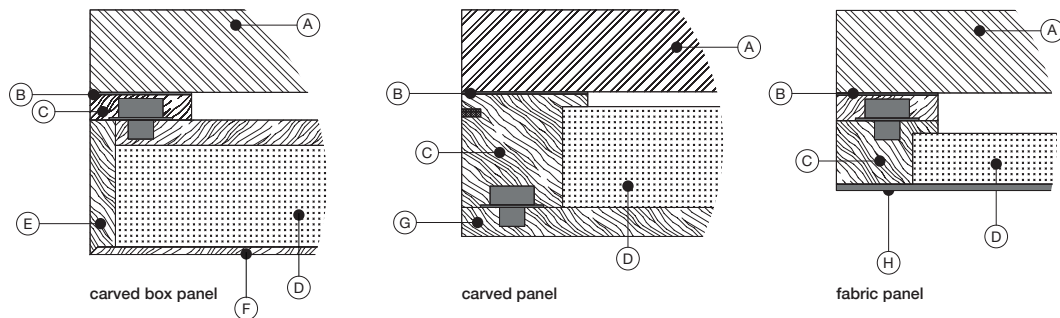
range

gamma - gamme - Auswahl - гамма



section details

dettagli della sezione - détails de la section - Schnitt Details - Детали разреза



- (A) **Wall** - muro - mur
Wand - Стена
- (B) **Anti-vibrations membrane** - membrana anti-vibrante - membrane anti-vibrante
antivibrierende Membran - Антивибрационная мембрана
- (C) **Wall anchorage structure** - telaio di ancoraggio - châssis de suspension au mur
Rahmen - Рамный анкер
- (D) **Sound absorbing foam** - espanso fonoassorbente - mousse absorbante
Schallabsorbierender Schaum - Звукопоглощающая пена
- (E) **Soundproofing wooden box** - scatola in legno fono impedito - Soundproofing wooden box
Boîte insonorisée en bois - Schallsisolierende Holz Box - Деревянная звукоизоляционная панель
- (F) **Sound absorbing wooden panel** - pannello in legno fonoassorbente - panneau acoustique absorbent en bois
Schallabsorbierender Holzpaneel - Деревянная звукопоглощающая панель
- (G) **Soundproofing wooden panel** - pannello in legno fono impedito - panneau en bois insonorisé
Schallsisolierender Holzpaneel - Деревянная звукоизоляционная панель
- (H) **Sound absorbing fabric covering** - rivestimento in tessuto fonoassorbente - revêtement en tissu absorbant
Schallabsorbierender Stoffbezug - Покрывало из звукопоглощающей ткани

Anti vibrations membrane - details



It is a high density and viscoelasticity synthetic soundproofing membrane that offers excellent levels of acoustic insulation in traditional construction systems with a minimum increase in thickness.

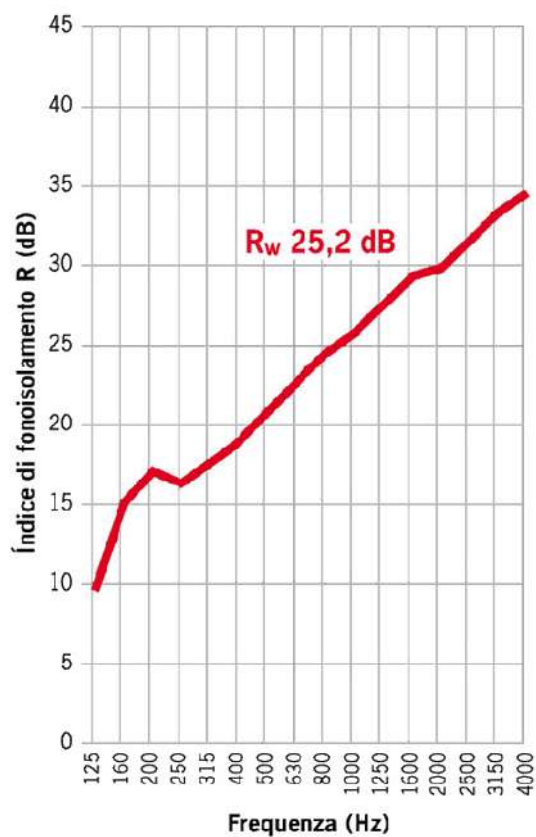
The membrane is installed on the anchoring frame in order to create a vibration isolation between the panel and the wall.

In terms of fire behavior, it is classified according to the new Euroclass standards as Euroclass B, s2, d0 (minimum contribution to the spread of flames does not drip and does not produce incandescent particles).

È una membrana sintetica fonoisolante ad elevata densità e viscoelasticità che offre eccellenti livelli di isolamento acustico nei sistemi costruttivi tradizionali con un aumento minimo di spessore.

La membrana viene installata sul telaio di ancoraggio al fine di creare un isolamento dalle vibrazioni tra il pannello e la parete.

In termini di comportamento al fuoco è classificata secondo le nuove norme Euroclasse come Euroclasse B, s2, d0 (contributo minimo alla propagazione delle fiamme non gocciola e non produce particelle incandescenti).



isolation test by Acutec

Sound absorbing foam - details

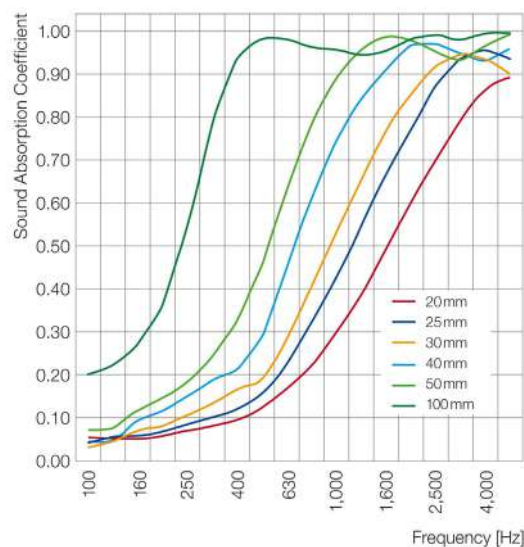


The sound absorbing foam is a flexible, open-cell foam made from melamine resin – a duroplastic synthetic material. Its open-cell surface guarantees that sound waves are not reflected as an echo but can penetrate the cell structure unhindered.

The sound energy is reduced in the cell structure, giving an excellent sound absorption capacity, furthermore meeting the most important international fire safety standards.

La schiuma fonoassorbente è una schiuma flessibile a cellule aperte in resina melamminica, un materiale sintetico duroplastico. La sua superficie a celle aperte garantisce che le onde sonore non vengano riflesse come un'eco ma possano penetrare senza ostacoli nella struttura cellulare.

L'energia sonora è ridotta nella struttura cellulare, offrendo un'eccellente capacità di assorbimento acustico, soddisfacendo inoltre i più importanti standard internazionali di sicurezza antincendio.



— BASF® impedance tube test

_materials & finishes

DECOR CARVING



Maple



Walnut



Canaletto Walnut



Rosewood



Oak



Teak



Wenge



Aniline dyed



ANILINE
Available in all
RAL / NCS colors

_The finishes shown are indicative and refer to the entire production range.
We recommend that you consult the samples which show the complete range of finishes, including those not shown here.
Laurameroni reserves the right to modify the range without warning.

Wall panels assembling system

wall panels assembling

montaggio boiserie - assemblage des boiserie - boiserie versammlung - монтаж стеновые панели

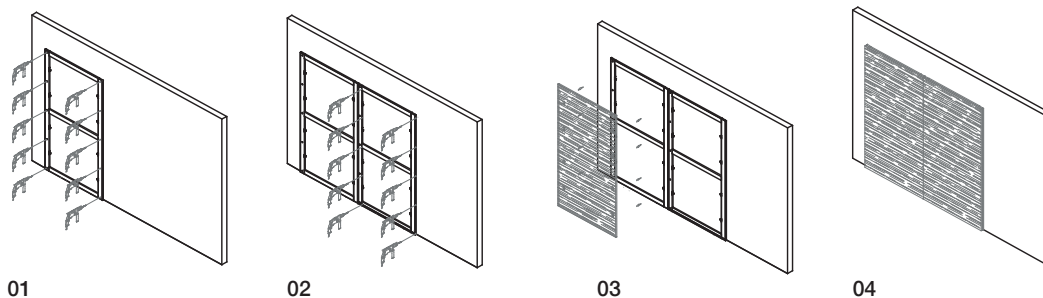
per consentire il montaggio è necessario che il pannello boiserie sia 2 cm più basso rispetto al soffitto ad ogni pannello boiserie ordinato deve corrispondere un telaio delle medesime dimensioni.

to allow the assembly, the wall panel must be 2 cm lower than the ceiling. To each ordered wall panel you have to add an anchorage structure of the same dimensions.

afin de permettre le montage le panneau boiserie doit être 2 cm plus bas que le plafond. Pour chaque panneau boiserie commandé il faut ajouter un châssis des mêmes dimensions.

die Wandpaneel muss 2 cm niedriger als die Decke, um den Aufbau zu erlauben. Für jede bestellte Wandpaneel erfordert man notwendigerweise ein Kupplungsgerüst derselben Abmessungen.

для правильного монтажа панели нужно чтобы она была на 2 см ниже потолка для каждой заказанной панели должна быть предусмотрена рама подходящих размеров.



01

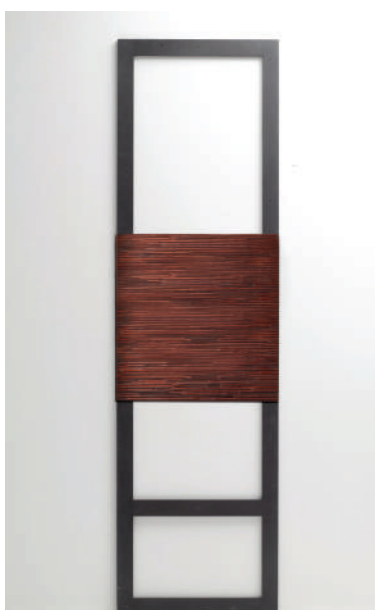
02

03

04



fitting frame



fitting connector

_maintenance

_Wood is a high-quality natural product. To maintain the natural character of wood and to protect surfaces from mechanical and chemical wear, veneered surfaces are coated with a high quality transparent paint. For cleaning and care, do not use acids or alkali-based cleaners, agents with bleaching additive, scouring powder, steel wool, pot scourers or similar. Anything hot or damp will cause damage to the surface. Remove soiling and liquids immediately. Use a dry soft cloth for cleaning, eventually add a little neutral cleaning agent to the water. The cloth must be only slightly damp, to prevent discolouration or swelling of the surface. It is then essential to rub the surfaces dry, so that there is no residual moisture.

_Do not use acid or alkali-based cleaners. Do not use scouring agents, steel wool, pot cleaners or similar. Do not use solvents to clean painted surfaces. Pointed or sharp objects, such as blades or knives, can damage (scratch) the surface. Anything hot or damp will cause damage to the surface. Clean painted surfaces with a clean, soft, lint-free cloth to avoid abrasion with particles of dirt. For soft-finish paint surfaces, use a soft, lint-free, slightly damp cloth. If heavily soiled, paint surfaces can be cleaned more easily with a neutral (silicone-free) cleaning agent. Do not use furniture polish or other care products to clean soft-finish paint surfaces. It is then essential to rub the surface dry, so that there is no residual moisture. Clean painted surfaces regularly with a soft, lint-free cloth to remove dust.

**BEDIF
FEREN
TBEUN
IQUE.**

LAURAMERONI S.r.l.
22040 Alzate Brianza (Como)
Via Manzoni, 2784
T +39 031 761450
F +39 031 763311
info@laurameroni.com
www.laurameroni.com

