

LV 102 S- Laurameroni collection

design Laurameroni



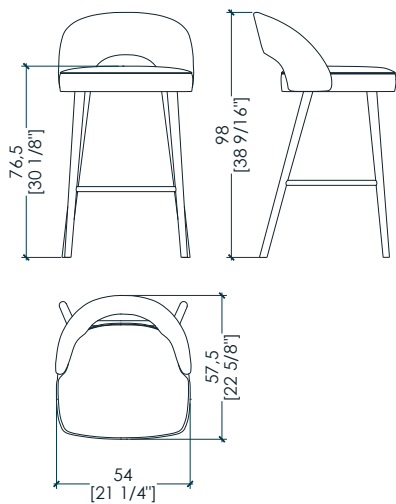
The LV 102 S high stool was created to perfectly integrate in both residential and public environments. In leather, velvet or fabric, it allows to make the most of the various Laurameroni finishes to decorate any room with maximum compositional freedom.

Lo sgabello alto LV 102 S nasce per integrarsi alla perfezione in ambienti sia residenziali che pubblici. In pelle, velluto o tessuto, permette di sfruttare al meglio le varie finiture Laurameroni per decorare con la massima libertà compositiva qualsiasi stanza.



_dimensions

LV 102 S high stool - sgabello alto -
hohe anrichte - tabouret haut - Табурет

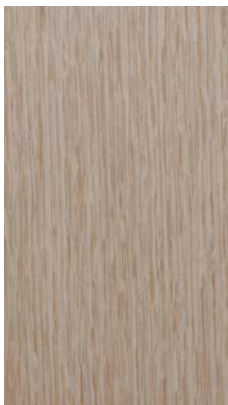


-Dimensions in centimeters and inches.
The right to discontinue and make changes is reserved.
This information is based on the latest product information available at the time of printing.

_materials & finishes for legs



Natural Ash



Aniline dyed



Available in all
RAL / NCS colors



Brushed mat lacquered



Available in all
RAL / NCS colours

_The finishes shown are indicative and refer to the entire production range.
Laurameroni reserves the right to modify the range without warning.

_materials & finishes of the seat covering

nubuck leathers



Nubuck 2110
Category A



Nubuck 2133
Category A



Nubuck 2115
Category A



Nubuck 2118
Category A



Nubuck 2101
Category A



Nubuck 2105
Category A



Nubuck 2102
Category A



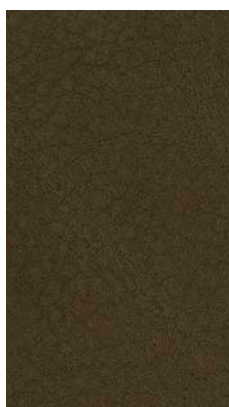
Nubuck 2132
Category A



Nubuck 2103
Category A



Nubuck 2104
Category A



Nubuck 2116
Category A

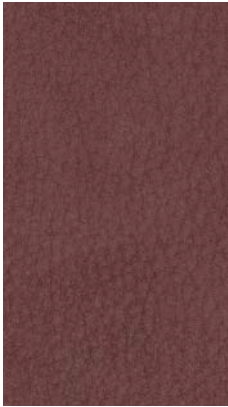


Nubuck 2119
Category A

_The finishes shown are indicative and refer to the entire production range.
Laurameroni reserves the right to modify the range without warning.

_materials & finishes of the seat covering

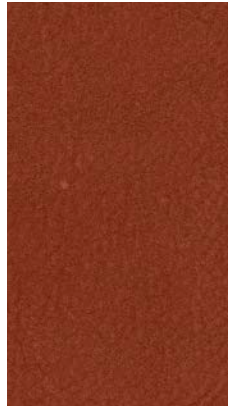
nubuck leathers



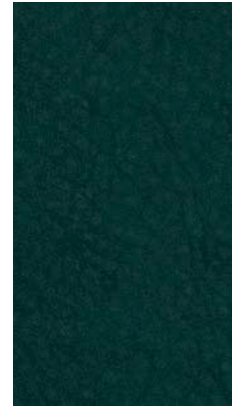
Nubuck 2125
Category A



Nubuck 2135
Category A



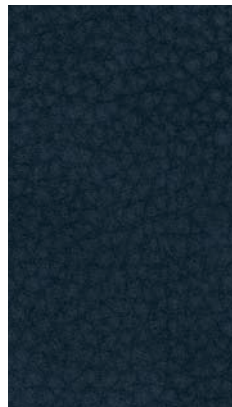
Nubuck 2109
Category A



Nubuck 2106
Category A



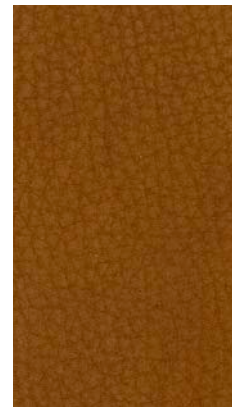
Nubuck 2136
Category A



Nubuck 2108
Category A



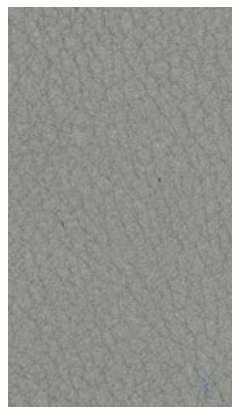
Nubuck 2137
Category A



Nubuck 2134
Category A



Nubuck 2120
Category A



Nubuck 2130
Category A



Nubuck 2107
Category A

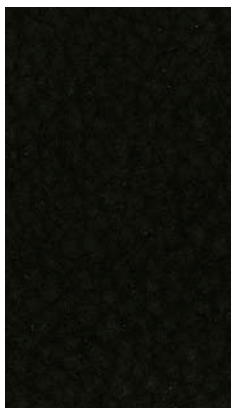


Nubuck 2117
Category A

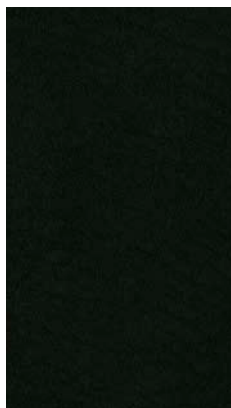
_The finishes shown are indicative and refer to the entire production range.
Laurameroni reserves the right to modify the range without warning.

_materials & finishes of the seat covering

nubuck leathers



Nubuck 2114
Category A



Nubuck 2138
Category A

_The finishes shown are indicative and refer to the entire production range.
Laurameroni reserves the right to modify the range without warning.

_materials & finishes of the seat covering

montana leathers



Montana 1302
Category B



Montana 1304
Category B



Montana 1305
Category B



Montana 1303
Category B



Montana 1301
Category B



Montana 1306
Category B

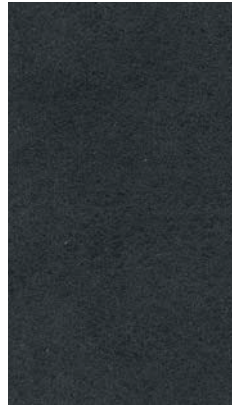
_The finishes shown are indicative and refer to the entire production range.
Laurameroni reserves the right to modify the range without warning.

materials & finishes of the seat covering

savana leathers



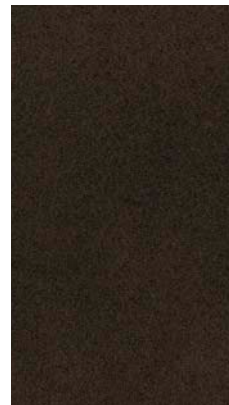
Savana 1008
Category B



Savana 1007
Category B



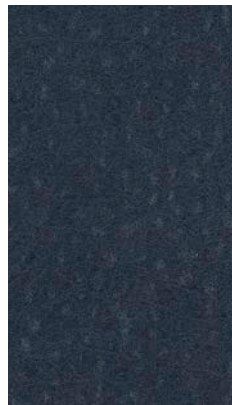
Savana 1003
Category B



Savana 1004
Category B



Savana 1012
Category B



Savana 1009
Category B



Savana 1002
Category B



Savana 1006
Category B



Savana 1001
Category B



Savana 1005
Category B

The finishes shown are indicative and refer to the entire production range.
Laurameroni reserves the right to modify the range without warning.

_materials & finishes of the seat covering

cloud leathers



Cloud 4109
Category C



Cloud 3403
Category C



Cloud 6048
Category C



Cloud 1015
Category C



Cloud 779
Category C



Cloud 6099
Category C

_The finishes shown are indicative and refer to the entire production range.
Laurameroni reserves the right to modify the range without warning.

materials & finishes of the seat covering

"shiny" velvet



Velvet 407



Velvet 417



Velvet 403



Velvet 412



Velvet 438



Velvet 418



Velvet 405



Velvet 401



Velvet 431



Velvet 429



Velvet 409



Velvet 404

The finishes shown are indicative and refer to the entire production range.
Laurameroni reserves the right to modify the range without warning.

_materials & finishes of the seat covering
"shiny velvet"



Velvet 414



Velvet 424



Velvet 413



Velvet 437



Velvet 457



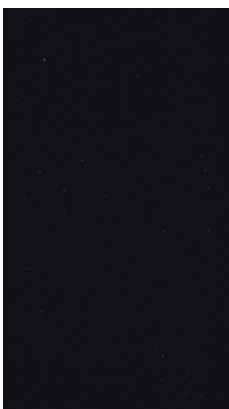
Velvet 477



Velvet 487



Swing 415

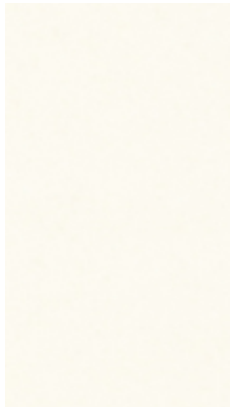


Velvet 406

_The finishes shown are indicative and refer to the entire production range.
Laurameroni reserves the right to modify the range without warning.

_materials & finishes of the seat covering

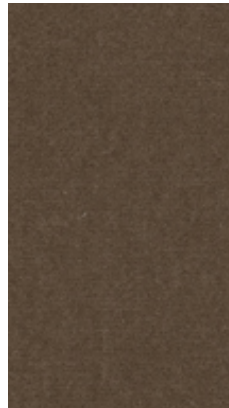
"mat" velvet



Velvet 01



Velvet 02



Velvet 23



Velvet 06



Velvet 07



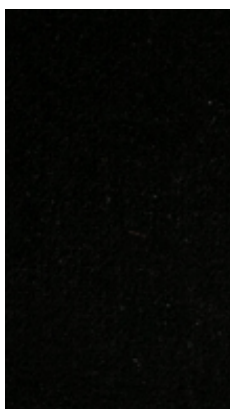
Velvet 29



Velvet 28



Velvet 2003



Velvet 26



Velvet 1406



Velvet 1402



Velvet 20

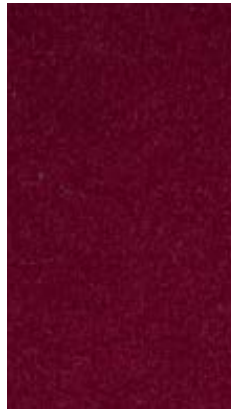
_The finishes shown are indicative and refer to the entire production range.
Laurameroni reserves the right to modify the range without warning.

_materials & finishes of the seat covering

"mat" velvet



Velvet 2004



Velvet 17



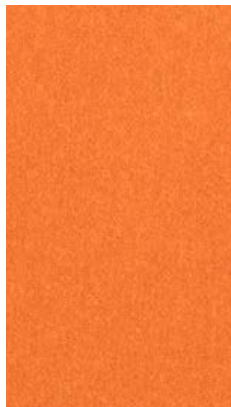
Velvet 2007



Velvet 2008



Velvet 1405



Velvet 13



Velvet 34



Velvet 1403



Velvet 1401

_The finishes shown are indicative and refer to the entire production range.
Laurameroni reserves the right to modify the range without warning.

_maintenance

WOOD

Wood is a high-quality natural product. To maintain the natural character of wood and to protect surfaces from mechanical and chemical wear, veneered surfaces are coated with a high quality transparent paint. For cleaning and care, do not use acids or alkali-based cleaners, agents with bleaching additive, scouring powder, steel wool, pot scourers or similar. Anything hot or damp will cause damage to the surface. Remove soiling and liquids immediately. Use a dry soft cloth for cleaning, eventually add a little neutral cleaning agent to the water. The cloth must be only slightly damp, to prevent discolouration or swelling of the surface. It is then essential to rub the surfaces dry, so that there is no residual moisture.

LEATHER

Leather is a natural product. It is individual, unmistakable and very durable. Natural unevenness, softness and minimal colouring which allows the material to breathe are the features of the best quality leathers. For maintenance and cleaning do not use acids or alkali-based cleaners. Never use stain remover, shoe cream, solvents, floor wax, cosmetics or other aggressive cleaning agents. Do not use scouring agents, steel wool, pot cleaners or similar. We recommend you do not expose the product to strong heat, as this can change its appearance. Please protect the product from abrasion, moisture and other factors so that the surface is not damaged beyond repair. Dust the leather surface regularly with a soft cloth. Use the blunt nozzle of a vacuum cleaner to remove crumbs and sand.

If you use wrong products, the finish of the leather may be damaged seriously; damage appears as time passes, after several cleaning operations. Attention: nubuck grain leather as well as leathers finished with aniline cannot be cleaned at all, if not with a simple dry and soft cloth. Any product could damage irrecoverably the leather!

Nubuck
European bovine hide, chrome tanned, aniline dyed. Nubuck natural grain.

Pixel
European bovine hide, chrome tanned, barrel dyed with aniline. Silkscreen-WR.

Tosca
European origin, chrome tanned, drum dyed, printed and finished to obtain a lightening effect.

Swing
European bovine hide, chrome tanned, aniline dyed. Top-grain leather, smooth matt surface, silky touch.

Skin
European bovine hide, dry vacuum, aniline dyed. Natural look, full hand, silky touch.

_maintenance

VELVET

Velvet is a woven pile fabric whose pile is less than 3 mm high. Velvet can be made from both natural and synthetic fibres. Depending on the material used to make it, its density and its pile length, velvet can be very fine, soft and flowing or tougher and firmer.

Our velvet fabrics have to be dry-cleaned.

Dust and loose dirt should be removed from velvet regularly by vacuuming it using a special upholstery nozzle (soft bristles). The upholstery nozzle must not have a ridge or sharp edges, as these could damage the fabric. Please also brush your velvet furniture regularly using a soft brush (such as a clothes brush), going with the grain. If necessary, you can also wipe your furniture in the direction of the grain with a damp chamois (light pressure) or use mild cleaning foam for a deeper clean. Please test it first.

Deep cleaning should only be performed by an expert upholstery cleaner. Depending on how much wear the furniture is subject to and the colour of the velvet, we recommend professional deep cleaning every four to five years.

You should hire a specialist to remove stains. If you want to try to remove the stain yourself first, proceed as follows:

Cleaning products must be tested first to ensure they are suitable. Make sure you choose a pH-neutral product. Acidic products damage cotton and cellulose fabrics. We recommend using special upholstery cleaning products to remove stains and clean furniture effectively.

Remove dust first, then test the colour fastness and changes to the surface of the upholstery fabric on an inconspicuous area by rubbing it with a clean, soft, white cloth dipped in the cleaning or stain removal product.

In some cases, pressure, heat and moisture can cause pressure marks on velvet, which may be light or heavy. This is typical of the product type and not a sign of inferior quality. In our experience, it is not always possible to remove sitting marks by treating the fabric, e.g. steaming and brushing it.

To some degree, sitting marks are therefore typical of all woven pile fabrics. The best way to reduce them is to clean the fabric regularly and occasionally brush the pile in every direction.

Please ensure that no hot-water bottles, electric blankets, etc. are placed on the fabric. The combination of heat and pressure can permanently change the surface of the fabric.

We recommend you do not expose the product to strong heat, as this can change its appearance.

SHINY VELVETS

100% Polyester



**BEDIF
FEREN
TBEUN
IQUE.**

LAURAMERONI s.r.l.
22040 Alzate Brianza (Como)
Via Manzoni, 2784
T +39 031 761450
info@laurameroni.com
www.laurameroni.com