

## Alto Piano - Alto Piano collection

design Bartoli Design



Seating system featuring rectangular legs incorporated into the padded structure upholstered in leather or velvet.

It is available in an armchair, two-seater, three-seater and island sofa versions and with decorative cushions.

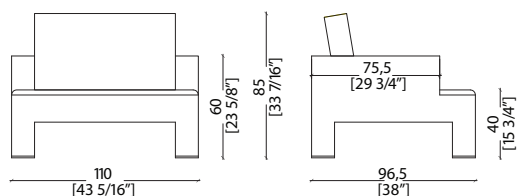
Sistema di sedute caratterizzato da gambe rettangolari incorporate alla struttura imbottita e rivestita in pelle o in velluto.

È disponibile in versione poltrona, divano a due posti, a tre posti e ad isola e con cuscini decorativi.

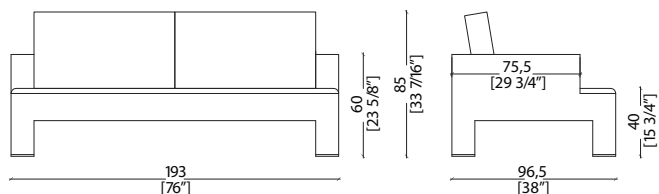


\_dimensions

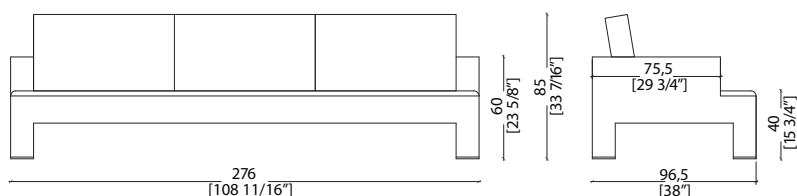
**AT 01** Armchair - Poltrona -  
Armstuhl - Fauteuil - Кресло



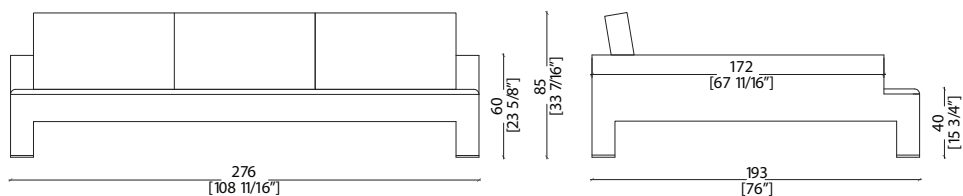
**AT 02** 2-Seater sofa - divano 2 posti -  
2-Sitzer Sofa - canapé 2 places - Двухместный диван



**AT 03** 3-Seater sofa - divano 3 posti -  
3-Sitzer Sofa - canapé 3 places - Трехместный диван



**AT 04** isle sofa - divano isola -  
"isola" sofa - canapé isola - Трехместный диван



-Dimensions in centimeters and inches.

The right to discontinue and make changes is reserved.

This information is based on the latest product information available at the time of printing.

\_materials & finishes

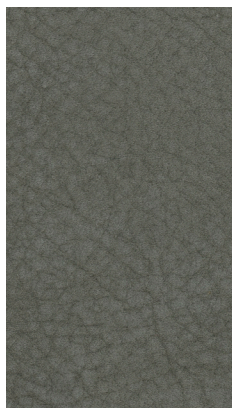
nubuck leathers



Nubuck 2100  
Category A



Nubuck 2133  
Category A



Nubuck 2115  
Category A



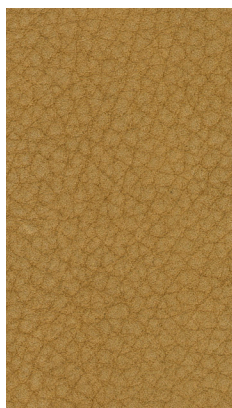
Nubuck 2118  
Category A



Nubuck 2101  
Category A



Nubuck 2105  
Category A



Nubuck 2102  
Category A



Nubuck 2132  
Category A



Nubuck 2103  
Category A



Nubuck 2104  
Category A



Nubuck 2116  
Category A

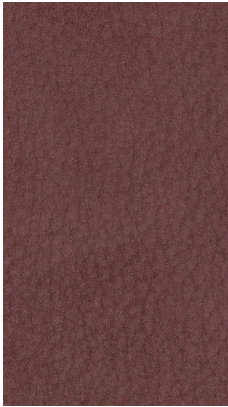


Nubuck 2119  
Category A

\_The finishes shown are indicative and refer to the entire production range.  
Laurameroni reserves the right to modify the range without warning.

\_materials & finishes

nubuck leathers



Nubuck 2125  
Category A



Nubuck 2135  
Category A



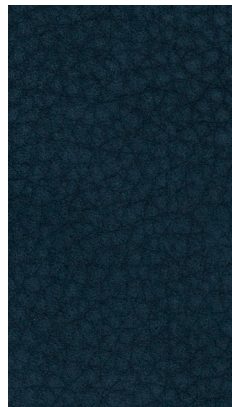
Nubuck 2109  
Category A



Nubuck 2106  
Category A



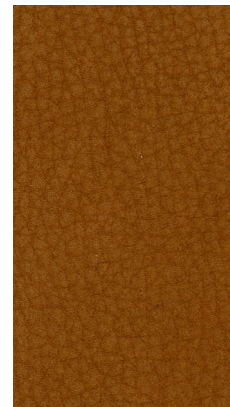
Nubuck 2136  
Category A



Nubuck 2108  
Category A



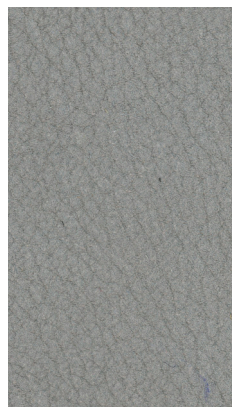
Nubuck 2137  
Category A



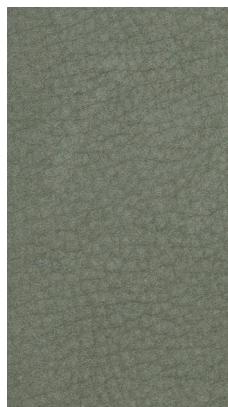
Nubuck 2134  
Category A



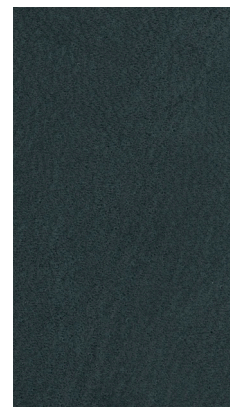
Nubuck 2120  
Category A



Nubuck 2130  
Category A



Nubuck 2107  
Category A

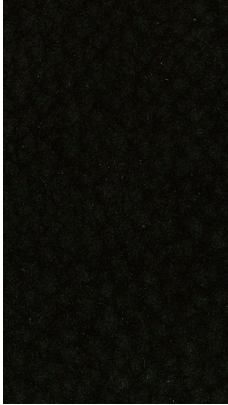


Nubuck 2117  
Category A

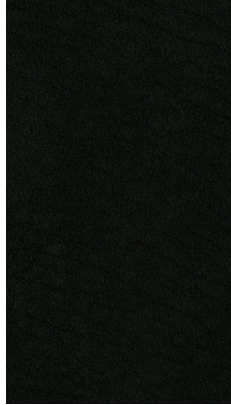
\_The finishes shown are indicative and refer to the entire production range.  
Laurameroni reserves the right to modify the range without warning.

\_materials & finishes

nubuck leathers



Nubuck 2114  
Category A



Nubuck 2138  
Category A

\_The finishes shown are indicative and refer to the entire production range.  
Laurameroni reserves the right to modify the range without warning.

\_materials & finishes

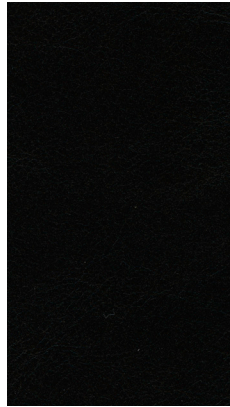
montana leathers



Montana 1302  
Category B



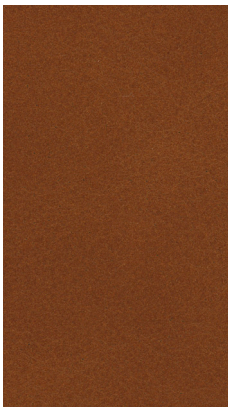
Montana 1304  
Category B



Montana 1305  
Category B



Montana 1303  
Category B



Montana 1301  
Category B



Montana 1306  
Category B

\_The finishes shown are indicative and refer to the entire production range.  
Laurameroni reserves the right to modify the range without warning.

\_materials & finishes

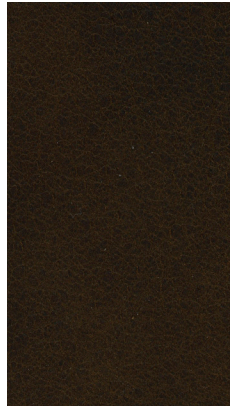
savana leathers



Savana 1008  
Category B



Savana 1007  
Category B



Savana 1003  
Category B



Savana 1004  
Category B



Savana 1012  
Category B



Savana 1009  
Category B



Savana 1002  
Category B



Savana 1006  
Category B



Savana 1001  
Category B



Savana 1005  
Category B

\_The finishes shown are indicative and refer to the entire production range.  
Laurameroni reserves the right to modify the range without warning.

\_materials & finishes

cloud leathers



Cloud 4109  
Category C



Cloud 3403  
Category C



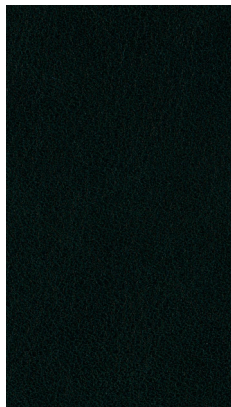
Cloud 6048  
Category C



Cloud 1015  
Category C



Cloud 779  
Category C



Cloud 6099  
Category C

\_The finishes shown are indicative and refer to the entire production range.  
Laurameroni reserves the right to modify the range without warning.



\_materials & finishes of the seat covering

matt velvets "lario"



Lario 60



Lario 01



Lario 02



Lario 63



Lario 61



Lario 64



Lario 03



Lario 04



Lario 1012



Lario 06



Lario 05



Lario 23

\_The finishes shown are indicative and refer to the entire production range.  
Laurameroni reserves the right to modify the range without warning.

materials & finishes of the seat covering

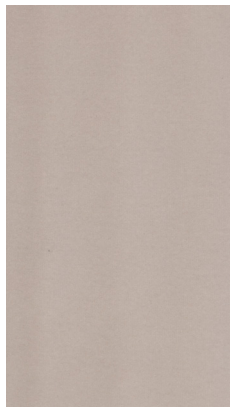
matt velvets "lario"



Lario 07



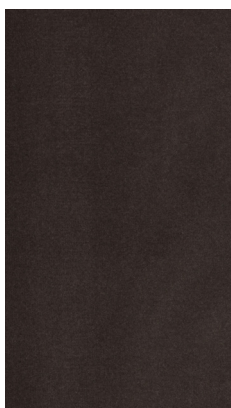
Lario 62



Lario 29



Lario 28



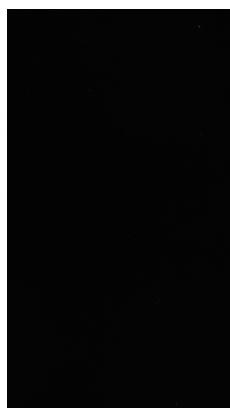
Lario 2003



Lario 2002



Lario 1404



Lario 26



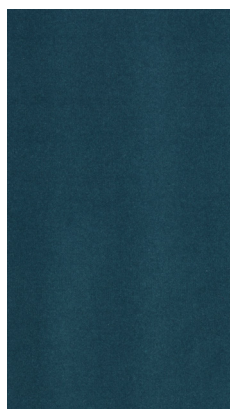
Lario 32



Lario 1406



Lario 1402



Lario 68

The finishes shown are indicative and refer to the entire production range.  
Laurameroni reserves the right to modify the range without warning.

materials & finishes of the seat covering

matt velvets "lario"



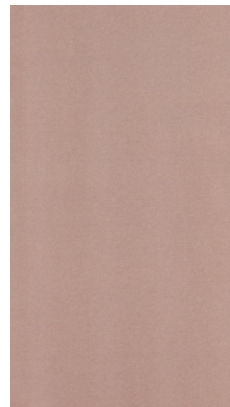
Lario 58



Lario 69



Lario 21



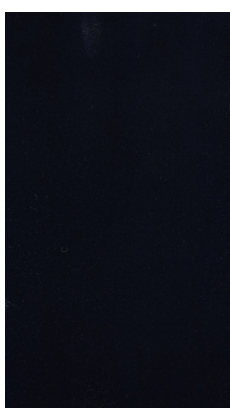
Lario 65



Lario 66



Lario 20



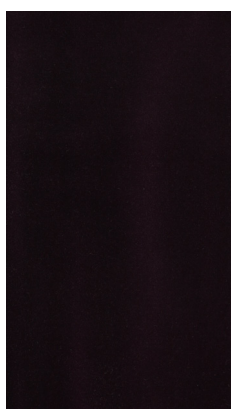
Lario 54



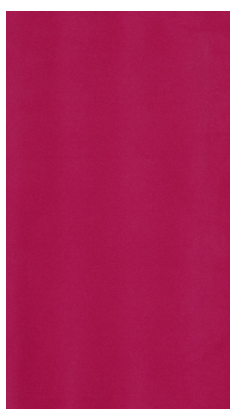
Lario 2004



Lario 19



Lario 67



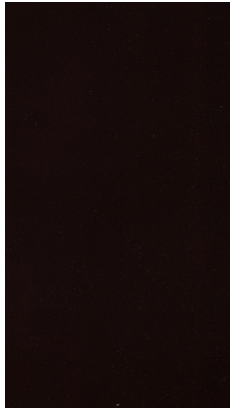
Lario 31



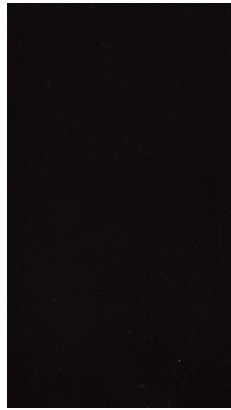
Lario 17

The finishes shown are indicative and refer to the entire production range.  
Laurameroni reserves the right to modify the range without warning.

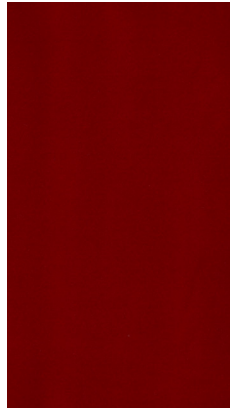
materials & finishes of the seat covering  
matt velvets "lario"



Lario 2007



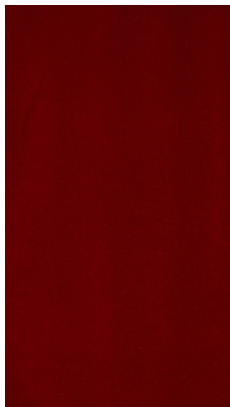
Lario 2006



Lario 2008



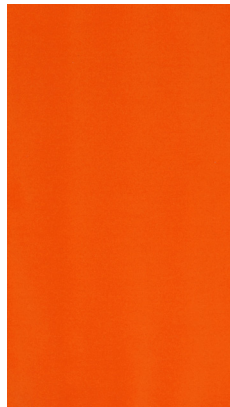
Lario 1405



Lario 70



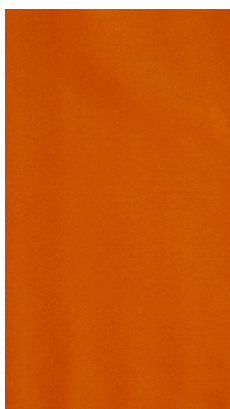
Lario 14



Lario 33



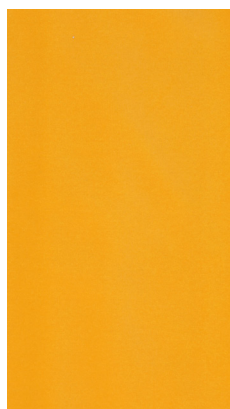
Lario 1101



Lario 13



Lario 72



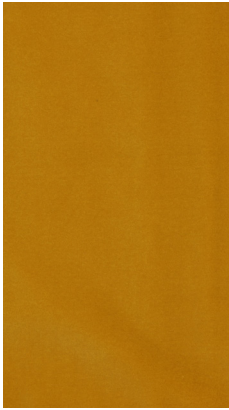
Lario 34



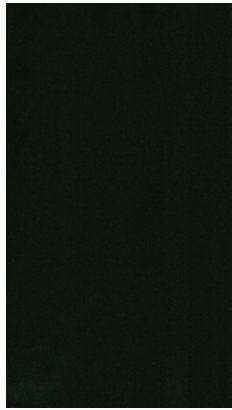
Lario 1403

The finishes shown are indicative and refer to the entire production range.  
Laurameroni reserves the right to modify the range without warning.

materials & finishes of the seat covering  
matt velvets "lario"



Lario 74



Lario 71



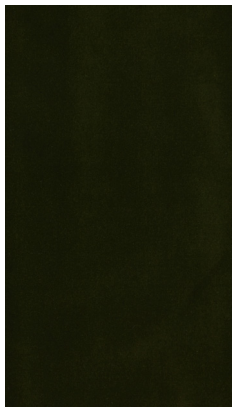
Lario 40



Lario 73



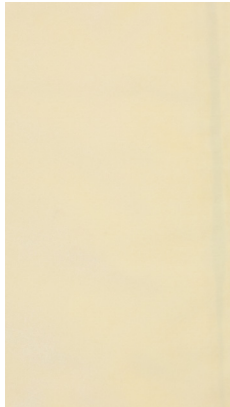
Lario 09



Lario 1401

The finishes shown are indicative and refer to the entire production range.  
Laurameroni reserves the right to modify the range without warning.

materials & finishes of the seat covering  
shiny velvets "roxana"



Roxana 02



Roxana 03



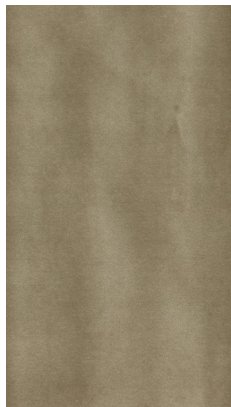
Roxana 1720



Roxana 1715



Roxana 33



Roxana 04



Roxana 1709



Roxana 1708



Roxana 08



Roxana 18



Roxana 19



Roxana 17

The finishes shown are indicative and refer to the entire production range.  
Laurameroni reserves the right to modify the range without warning.

materials & finishes of the seat covering  
shiny velvets "roxana"



Roxana 11



Roxana 12



Roxana 1726



Roxana 16



Roxana 1001



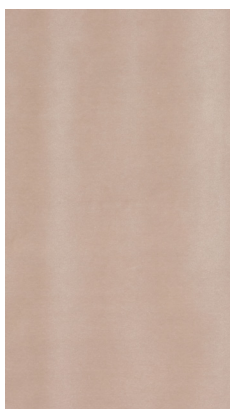
Roxana 111



Roxana 1716



Roxana 1722



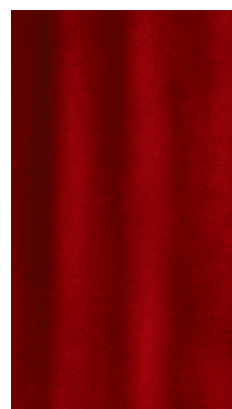
Roxana 35



Roxana 7



Roxana 9



Roxana 1000

The finishes shown are indicative and refer to the entire production range.  
Laurameroni reserves the right to modify the range without warning.

materials & finishes of the seat covering  
shiny velvets "roxana"



Roxana 1717



Roxana 10



Roxana 30



Roxana 28



Roxana 1004



Roxana 5

The finishes shown are indicative and refer to the entire production range.  
Laurameroni reserves the right to modify the range without warning.



\_maintenance

#### **LEATHER**

The finish of the finest leathers can be seriously damaged through the use of improper or unsuitable products; damage occurs over time, after several cleaning operations. Do not use acids or alkali-based cleaners. Never use stain removers, shoe cream, solvents, floor wax, cosmetics or other harsh cleaners. Do not use abrasive agents, steel wool, pot cleaners or similar. It is recommended to protect the product from abrasion, humidity and other factors so that the surface is not irreparably damaged. It is advisable not to expose the product to strong heat sources, as this can alter its appearance. For cleaning and care, regularly wipe the leather surface with a soft cloth. Use the blunt nozzle of a vacuum cleaner to remove any crumbs and sand.

Attention: Nubuck grain leathers as well as leathers finished with aniline cannot be absolutely cleaned, except with a simple soft and completely dry cloth. Any product could irreparably damage the skin.

#### **PELLE**

La finitura delle pelli più pregiate può danneggiarsi gravemente con l'uso di prodotti impropri o non idonei; i danni si manifestano con il passare del tempo, dopo diverse operazioni di pulizia. Non utilizzare acidi o detergenti a base di alcali. Non usare mai smacchiatori, crema per scarpe, solventi, cera per pavimenti, cosmetici o altri detergenti aggressivi. Non utilizzare agenti abrasivi, lana d'acciaio, detergenti per pentole o simili. Si consiglia di proteggere il prodotto da abrasione, umidità e altri fattori in modo che la superficie non venga danneggiata irreparabilmente. Si consiglia di non esporre il prodotto a forti fonti di calore, poiché questo può alterarne l'aspetto. Per la pulizia e la cura, spolverare regolarmente la superficie della pelle con un panno morbido. Utilizzare l'ugello smussato di un'aspirapolvere per rimuovere eventuali briciole e sabbia.

Attenzione: le pelli fiore Nabuk così come le pelli rifinite con anilina non possono essere assolutamente pulite, se non con un semplice panno morbido e completamente asciutto. Qualsiasi prodotto potrebbe danneggiare irreparabilmente la pelle.

\_maintenance

#### **VELVET**

Our velvet fabrics must be dry cleaned. Deep cleaning and spot cleaning should only be performed by a tapestry cleaning expert. Depending on the wear and on the colour of the velvet, we recommend a professional deep cleaning every four to five years. In our experience, it is not always possible to remove the signs of wear on the seat by treating the fabric.

Do not use acids or alkali-based cleaners. Do not use stain removers, shoe cream, solvents, floor wax, cosmetics or other harsh cleaners. Do not use abrasive agents, steel wool, pot cleaners or similar. It is recommended to protect the product from abrasion, humidity and other factors so that the surface is not irreparably damaged.

For cleaning and care, it is recommended to brush the surfaces regularly using a soft brush (such as a clothes brush) following the natural grain of the fabric. Loose dust and dirt can be removed regularly from velvet by vacuuming with a special nozzle for tapestry or soft-bristled upholstery. The nozzle must not have protrusions or sharp edges, as they could damage the velvet. If necessary, you can clean the product with a damp suede, applying light pressure and following the natural grain of the fabric.

#### **VELLUTO**

I nostri tessuti in velluto devono essere lavati a secco. La pulizia profonda e la pulizia di macchie devono essere eseguite solo da un esperto addetto alla pulizia della tappezzeria. A seconda dell'usura e del colore del velluto, si consiglia una pulizia profonda professionale ogni quattro-cinque anni. Per la nostra esperienza, non è in ogni caso sempre possibile rimuovere i segni dell'usura sulla seduta trattando il tessuto.

Non utilizzare acidi o detergenti a base di alcali. Non usare smacchiatori, crema per scarpe, solventi, cera per pavimenti, cosmetici o altri detergenti aggressivi. Non utilizzare agenti abrasivi, lana d'acciaio, detergenti per pentole o simili. Si consiglia di proteggere il prodotto da abrasione, umidità e altri fattori in modo che la superficie non venga danneggiata irreparabilmente.

Per la pulizia e la cura, si consiglia di spazzolare regolarmente le superfici usando una spazzola morbida (come una spazzola per vestiti) seguendo le venature naturali del tessuto. La polvere e lo sporco sciolto possono essere rimossi regolarmente dal velluto aspirando con una speciale bocchetta per tappezzeria o imbottiti a setole morbide. La bocchetta non deve presentare risalti o spigoli vivi, poiché potrebbero danneggiare il velluto. Se necessario, è possibile pulire il prodotto con una pelle scamosciata umida, facendo una leggera pressione e seguendo le venature naturali del tessuto.

\_maintenance

**ROXANA VELVETS**

100% Trevira CS

Width  
App. 140 cm

Weight  
450 g/m<sup>2</sup> (+/- 5%)

Abrasion resistance  
180.000 Martindale cycles  
(EN ISO 12947-2)

Pilling  
4/5 (EN ISO 12945-2)

Flammability  
UNI 9177 - Class 1  
NF P 92-503-507 M1  
California TB 117:2013  
EN 1021-1&2  
BS 5852-Part 0-1 (C&M)  
DIN 4102 B1  
IMO MSC 307(88)  
Annex 1 Part 7-8  
UNI 9175 1.IM

Cleaning  
Dry-cleaning  
Please see the ISO symbols

Light fastness  
5 (EN ISO 105-B02)

Fastness to rubbing  
Wet 4/5; Dry 4/5  
(EN ISO 105X12)

Note  
This product has been  
piece-dyed, following a  
certain mechanical working  
process. Batch to batch  
chromatic variations must  
be considered as normal  
and are to be evaluated  
with the usual tolerance  
of this type of fabric.  
Work separately dye lots.



**LARIO VELVETS**

100% Cotton

Width  
App. 140 cm

Weight  
540 g/m<sup>2</sup> (+/- 5%)

Abrasion resistance  
70.000 Martindale cycles  
(EN ISO 12947-2)

Pilling  
5 (EN ISO 12945-2)

Flammability  
BS 5852-c&m  
(With Coating)  
California TB 117:2013

Light fastness  
4/5 (EN ISO 105-B02)

Fastness to rubbing  
Wet 4/5; Dry 4/5  
(EN ISO 105X12)

Cleaning  
Dry-cleaning  
Please see the ISO symbols

Note  
This product has been  
piece-dyed, following a  
certain mechanical working  
process. Batch to batch  
chromatic variations must  
be considered as normal  
and are to be evaluated  
with the usual tolerance  
of this type of fabric.  
Work separately dye lots.



**BEDIF  
FEREN  
TBEUN  
IQUE.**

LAURAMERONI s.r.l.  
22040 Alzate Brianza (Como)  
Via Manzoni, 2784  
T +39 031 761450  
info@laurameroni.com  
www.laurameroni.com