

## Maxima cabinet system - Maxima collection

design Bartoli Design



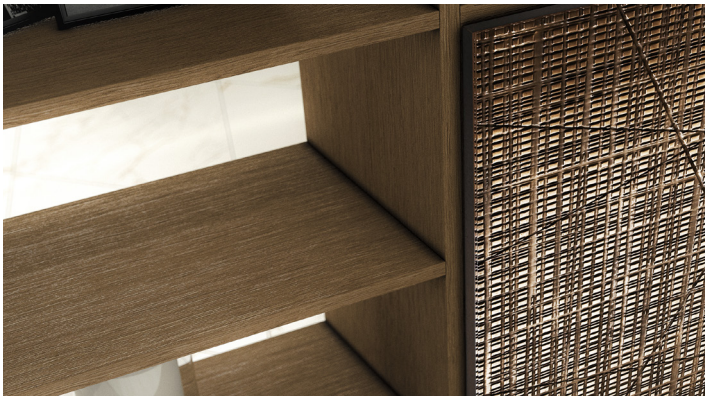
Cabinet system in wood with random Maxima carving, made-to-measure in modules of different sizes, with open compartments, LED lighting and customized accessories. Available in all wood essences of the Maxima collection and in aniline-dyed oak in all the RAL colours.

Sistema armadio in legno con scolpitura casuale Maxima disponibile su misura in moduli di diverse dimensioni, con vani a giorno, illuminazione LED ed accessori personalizzati. Disponibile in tutte le essenze di legno della collezione Maxima ed in rovere tinto anilina in tutti i colori della scala RAL.



## Maxima cabinet system - Maxima collection

design Bartoli Design



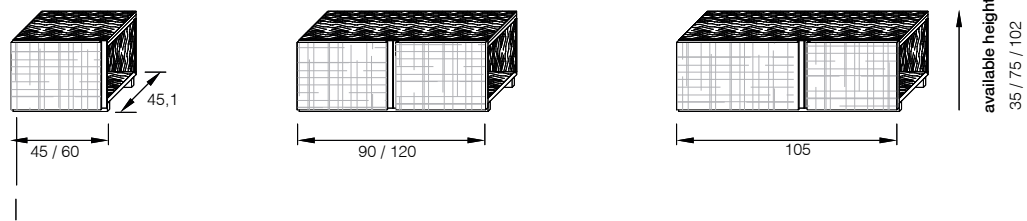
The Maxima day system is a flexible and elegant solution that can be composed in multiple wardrobe versions and combined with integrated wall panels and doors from the same collection.

L'armadio giorno Maxima è una soluzione flessibile ed elegante che può essere composta in molteplici declinazioni di armadi e combinata con sistemi boiserie e porte integrate della medesima collezione.

\_dimensions

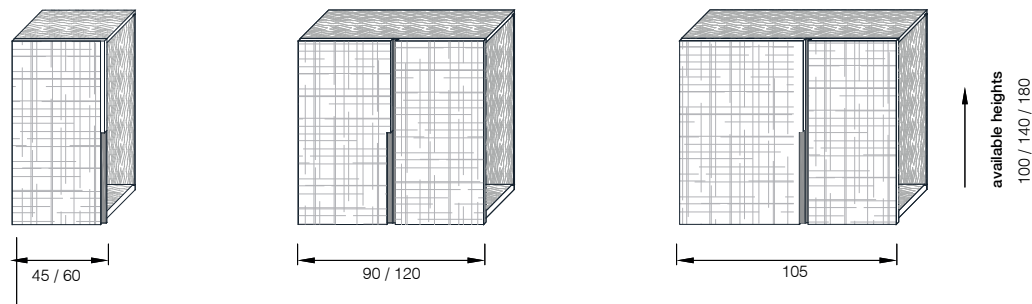
**bases**

basamenti – piétements – Unterstruktur – Нижний шкаф



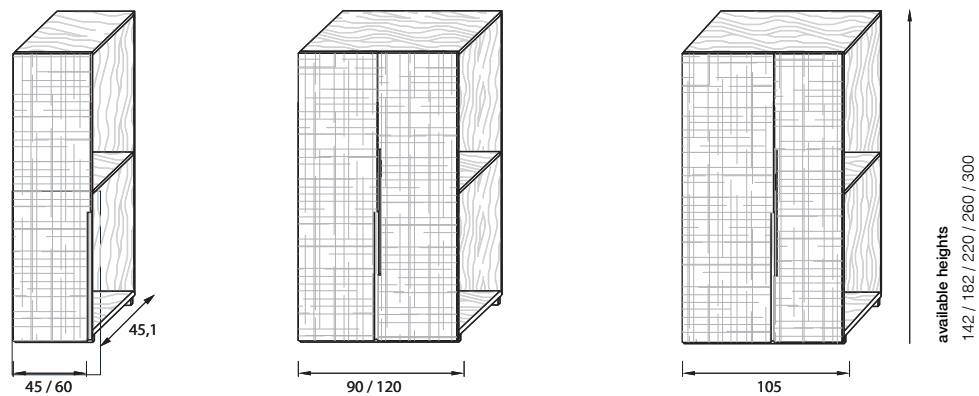
**hanging unit**

pensile – élément mural – hängeschränk- Навесной шкаф



**columns**

colonne – colonnes – Säulen - колонны



-Dimensions in centimeters and inches.

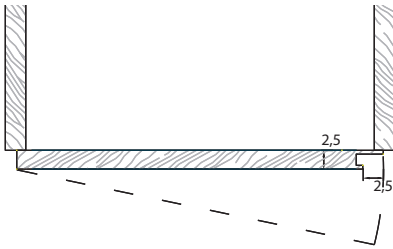
The right to discontinue and make changes is reserved.

This information is based on the latest product information available at the time of printing.

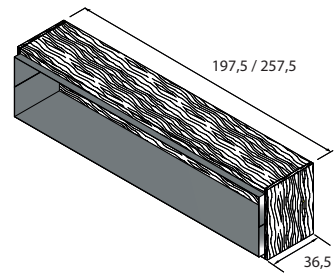


\_dimensions

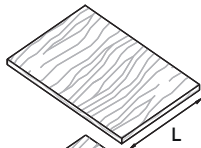
handles detail



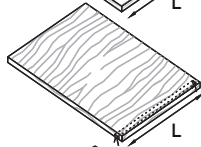
niche



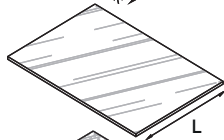
components



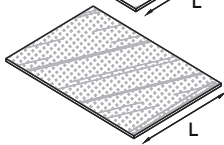
adjustable shelf  
L. 42,5 / 57,5 / 87,5 / 102,5 / 117,5



fixed shelf with led  
L. 42,5 / 57,5 / 87,5 / 102,5 / 117,5

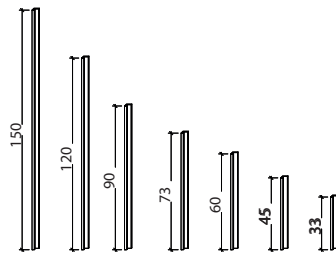


adjustable crystal shelf  
L. 42,5 / 57,5 / 87,5 / 102,5 / 117,5

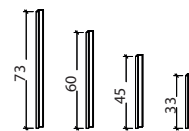


adjustable crystal fumé shelf  
L. 42,5 / 57,5 / 87,5 / 102,5 / 117,5

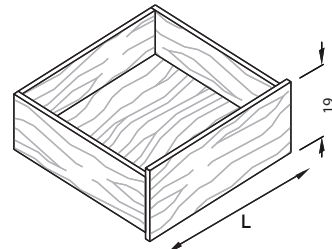
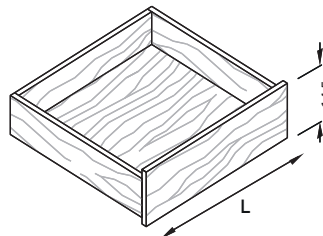
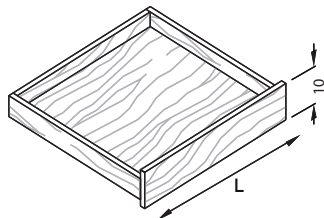
columns handles



bases handles



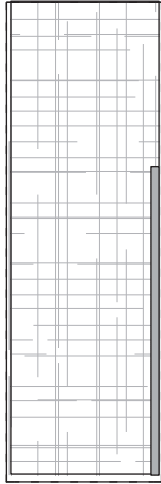
drawers  
L. 34 / 49 / 79 / 94 / 109



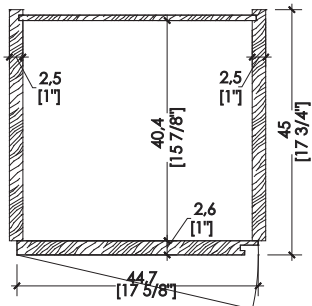
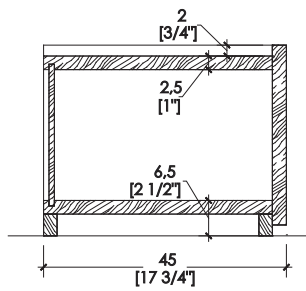
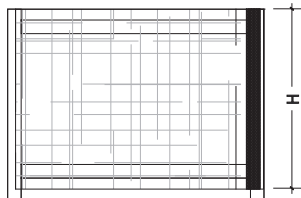
-Dimensions in centimeters and inches.  
The right to discontinue and make changes is reserved.  
This information is based on the latest product information available at the time of printing.

\_dimensions

maxima carved wood



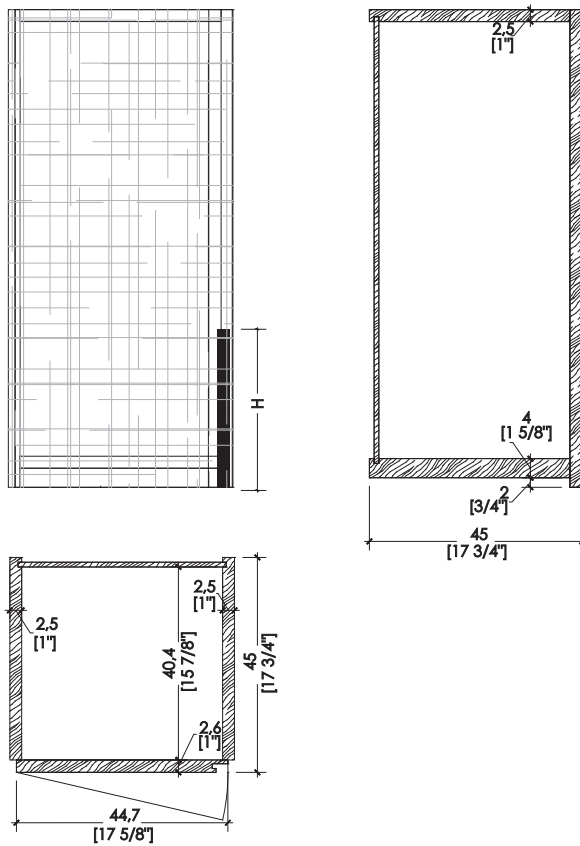
element for base unit



-Dimensions in centimeters and inches.  
The right to discontinue and make changes is reserved.  
This information is based on the latest product information available at the time of printing.

\_dimensions

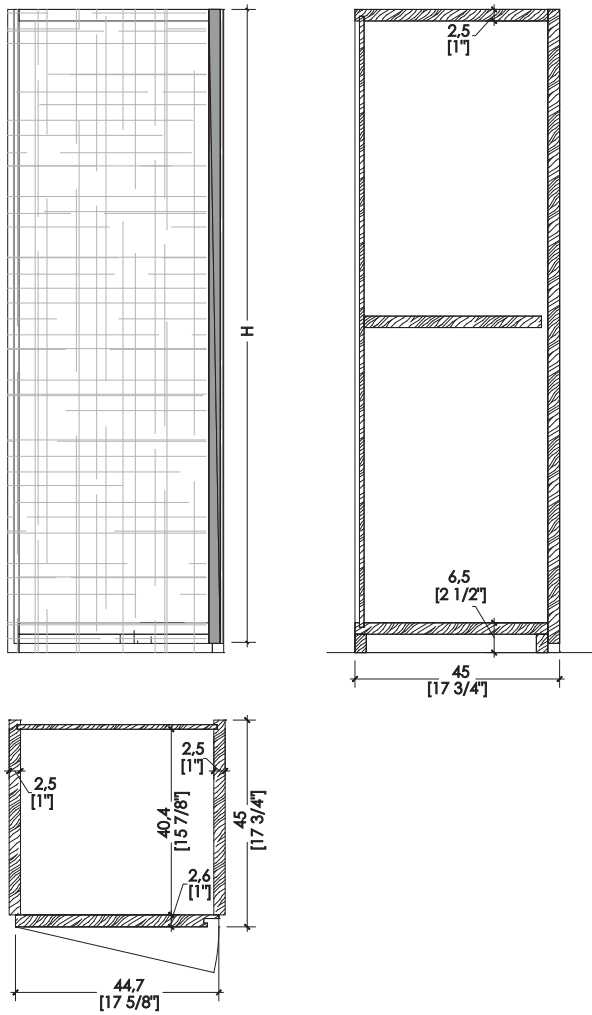
element for hanging unit



-Dimensions in centimeters and inches.  
The right to discontinue and make changes is reserved.  
This information is based on the latest product information available at the time of printing.

\_dimensions

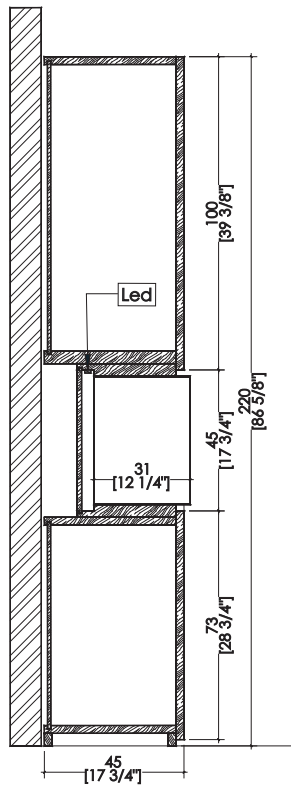
element for high storage unit



-Dimensions in centimeters and inches.  
The right to discontinue and make changes is reserved.  
This information is based on the latest product information available at the time of printing.

\_dimensions

niche vertical section



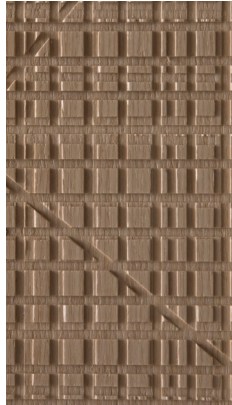
-Dimensions in centimeters and inches.  
The right to discontinue and make changes is reserved.  
This information is based on the latest product information available at the time of printing.



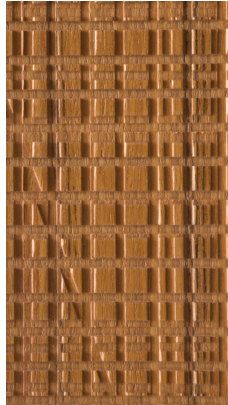
\_materials & finishes  
maxima carved woods



Maple



Oak



Teak



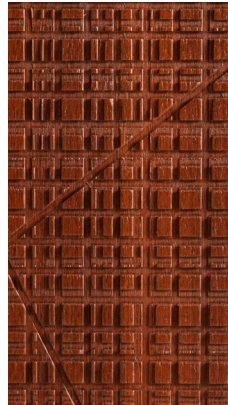
Canaletto Walnut



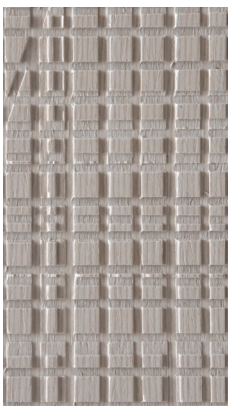
Rosewood



Wenge



Mahogany



Aniline dyed

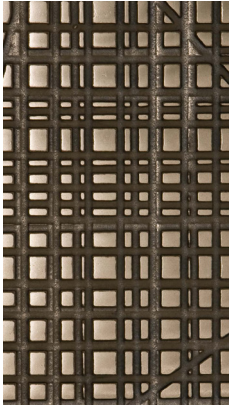


Available in all  
RAL / NCS colours

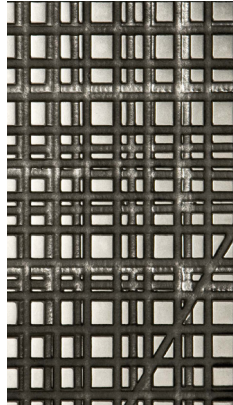
\_The finishes shown are indicative and refer to the entire production range.  
Laurameroni reserves the right to modify the range without warning.

\_materials & finishes

maxima liquid metal



Liquid Metal Bronze



Liquid Metal Tin



Liquid Metal Gold 9K



Liquid Metal Copper

\_The finishes shown are indicative and refer to the entire production range.  
Laurameroni reserves the right to modify the range without warning.

\_maintenance

**WOOD**

To maintain the natural wood features and protect them from mechanical and chemical wear, the veneered surfaces are coated with a high-quality transparent varnish. Do not use acid or alkaline detergents, agents with bleaching additives, abrasive powders, steel wool, sponges or the like. Anything hot or humid can cause surface damage. Remove dirt and liquids immediately.

For the cleaning and care, it is best to use a soft, dry cloth.

If necessary, the cloth can be slightly dampened and dipped in neutral detergent thoroughly diluted in water. The cloth should only be slightly damp to avoid discoloration or swelling of the surface. Finally, it is essential to gently rub dry surfaces, so that there is no residual moisture.

**LEGNO**

Per mantenere il carattere naturale del legno e proteggerlo dall'usura meccanica e chimica, le superfici impialacciate sono rivestite con una vernice trasparente di alta qualità. Non usare detergenti acidi o alcalini, agenti con additivi sbiancanti, polveri abrasive, lana d'acciaio, spugne o simili. Qualsiasi cosa calda o umida può causare danni alla superficie. Rimuovere immediatamente sporco e liquidi. Per la pulizia e la cura, è preferibile utilizzare un panno morbido e asciutto. Eventualmente il panno può essere leggermente inumidito ed intinto in detergente neutro abbondantemente diluito in acqua. Il panno deve essere solo leggermente umido, per evitare scolorimenti o rigonfiamenti della superficie. È infine essenziale strofinare gentilmente le superfici asciutte, in modo che non sussista umidità residua.

\_maintenance

**METAL**

To maintain the natural features of the metal and to protect the specific craftsmanship from oxidation and discoloration, the metal surfaces are coated with a high-quality transparent varnish. Do not use acid cleaners, solvents or alkalis. Do not use abrasive agents, steel wool, pot cleaners, glass cleaners, aggressive solvents, dyes, bleach or the like. Pointed or sharp objects, such as blades or knives, can cause damage to the surface. Anything hot or humid can cause surface damage.

For cleaning and care, remove light dirt with a soft cloth and a neutral household cleaning product well diluted in water. Gently clean the metal parts by hand with cold or warm water and dry immediately with a soft cloth.

**METAL**

Per mantenere il carattere naturale del metallo e tutelare la specifica lavorazione artigianale da ossidazione e scolorimento, le superfici metalliche sono rivestite con una vernice trasparente di alta qualità.

Non utilizzare detergenti acidi, solventi o alcali. Non usare agenti abrasivi, lana d'acciaio, detergenti per pentole, detergenti per vetri, solventi aggressivi, coloranti, candeggina o simili. Oggetti appuntiti o taglienti, come lame o coltelli, possono causare danni alla superficie. Qualsiasi cosa calda o umida può causare danni alla superficie.

Per la pulizia e la cura, rimuovere lo sporco leggero con un panno morbido ed un prodotto neutro per la pulizia della casa abbondantemente diluito in acqua.

Pulire delicatamente a mano le parti metalliche con acqua fredda o tiepida ed asciugare immediatamente con un panno morbido.

**BEDIF  
FEREN  
TBEUN  
IQUE.**

LAURAMERONI s.r.l.  
22040 Alzate Brianza (Como)  
Via Manzoni, 2784  
T +39 031 761450  
info@laurameroni.com  
www.laurameroni.com