

Stars cabinet system - Stars collection

design Bartoli Design



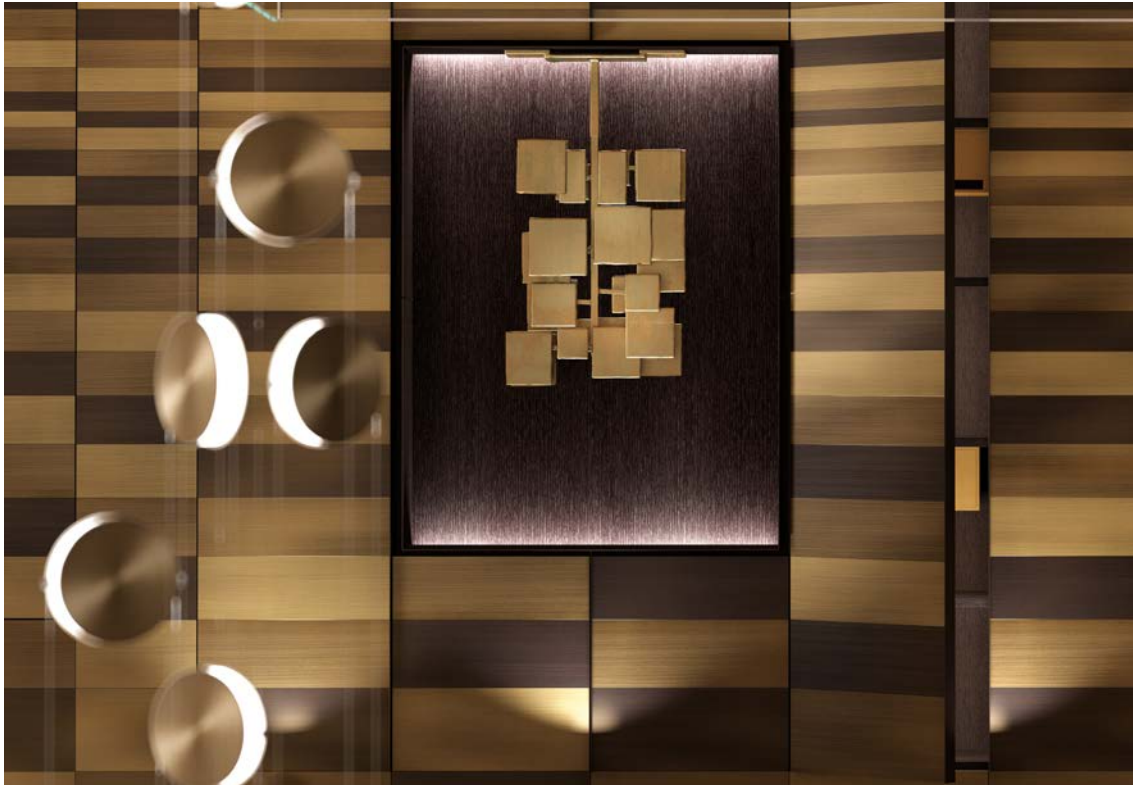
Wardrobes System in wood and metal with Stars decoration available in modules of different sizes, with Stars metal bands decoration available in all the metals of the collection and with horizontal and vertical decor.

Sistema di armadi in legno e metallo con decorazione Stars disponibile in moduli di diverse dimensioni, con decorazione in bande metalliche Stars disponibile in tutti i metalli della collezione e con decorazione orizzontale e verticale.



Stars cabinet system - Stars collection

design Bartoli Design



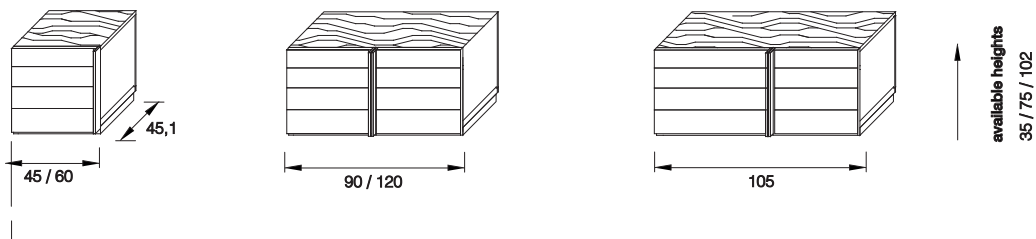
The Stars system has a design conceived to satisfy the most demanding customers, offering a unique luxury product made with noble metals such as brass or copper, and enhanced by the various accessory options and the integrated doors and wall panels, to create infinite compositions and allow complete customization.

Il sistema Stars ha un design ideato per soddisfare i clienti più esigenti, offrendo un prodotto di lusso unico, realizzato in preziosi metalli quali ottone o rame, valorizzato dalle svariate possibilità di accessorio e dai sistemi di porte e boiserie integrate, per creare infinite composizioni e permettere una completa personalizzazione.

_dimensions

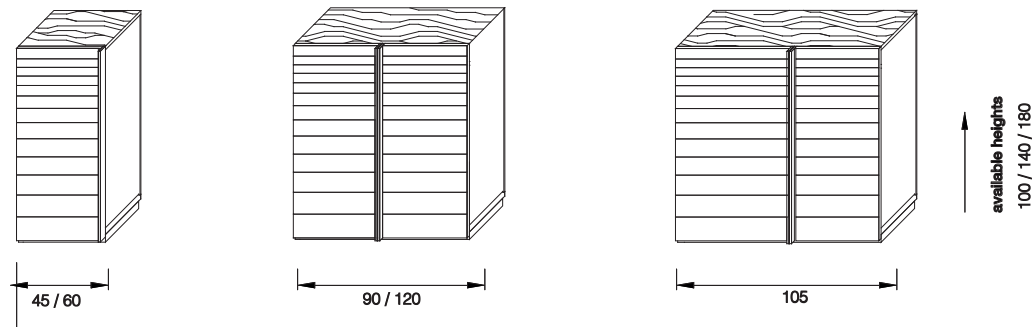
bases

basamenti – piétements – Unterstruktur – Нижний шкаф



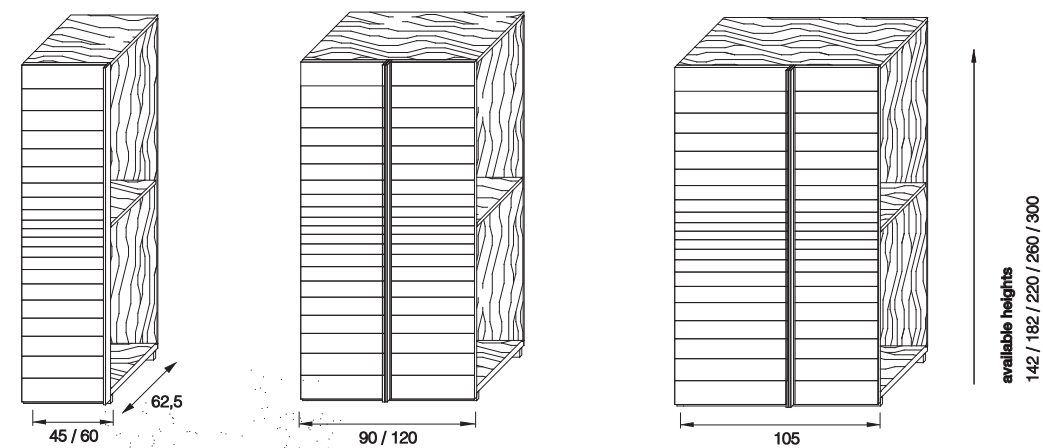
hanging unit

pensile – élément mural – hängeschrank- Навесной шкаф



columns

colonne – colonnes – Säulen - колонны



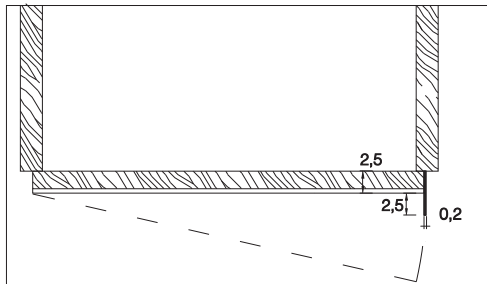
-Dimensions in centimeters and inches.

The right to discontinue and make changes is reserved.

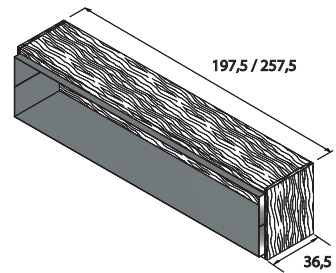
This information is based on the latest product information available at the time of printing.

_dimensions

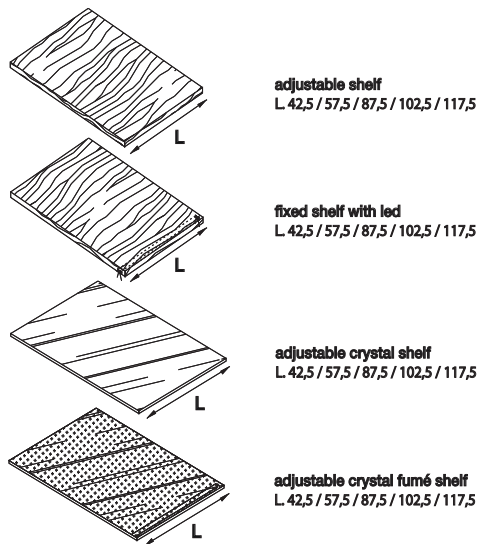
handles detail



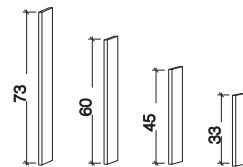
niche



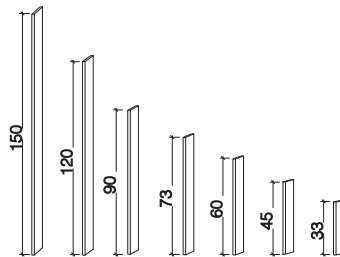
components



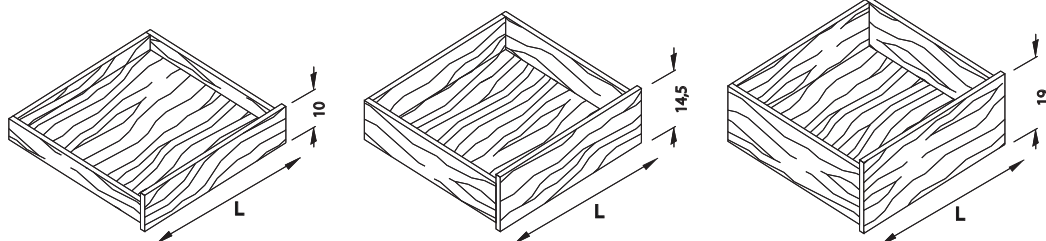
columns handles



bases handles



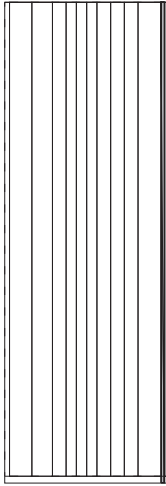
drawers
L 34 / 49 / 79 / 94 / 109



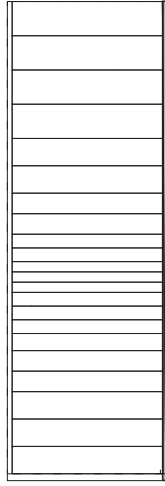
-Dimensions in centimeters and inches.
The right to discontinue and make changes is reserved.
This information is based on the latest product information available at the time of printing.

_dimensions

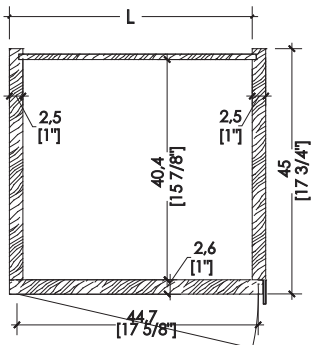
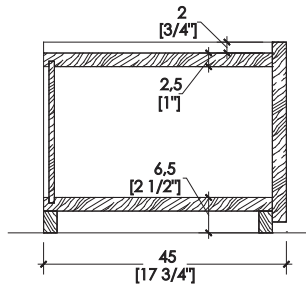
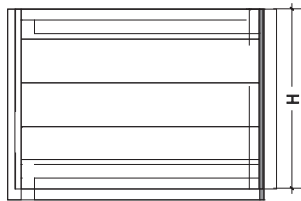
vertical stars carving



horizontal stars carving



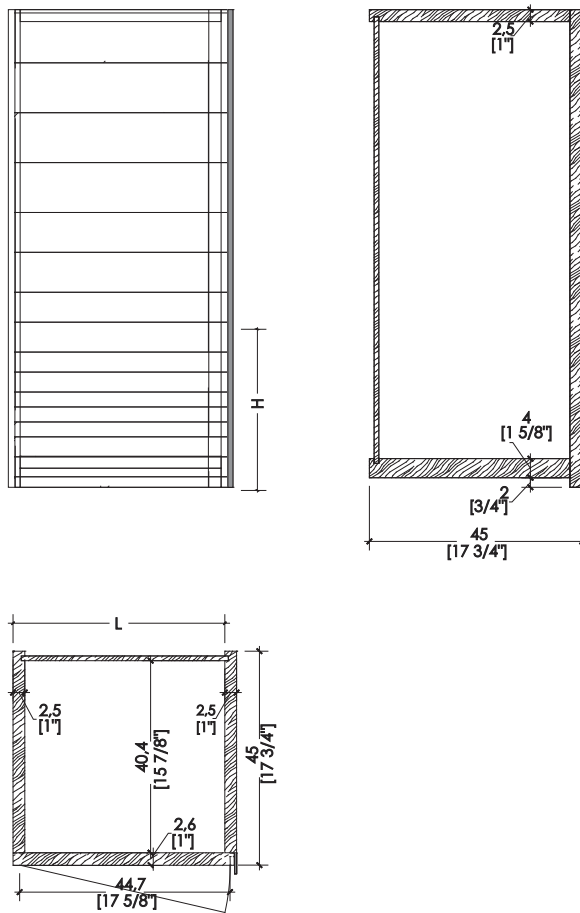
element for base unit



-Dimensions in centimeters and inches.
The right to discontinue and make changes is reserved.
This information is based on the latest product information available at the time of printing.

_dimensions

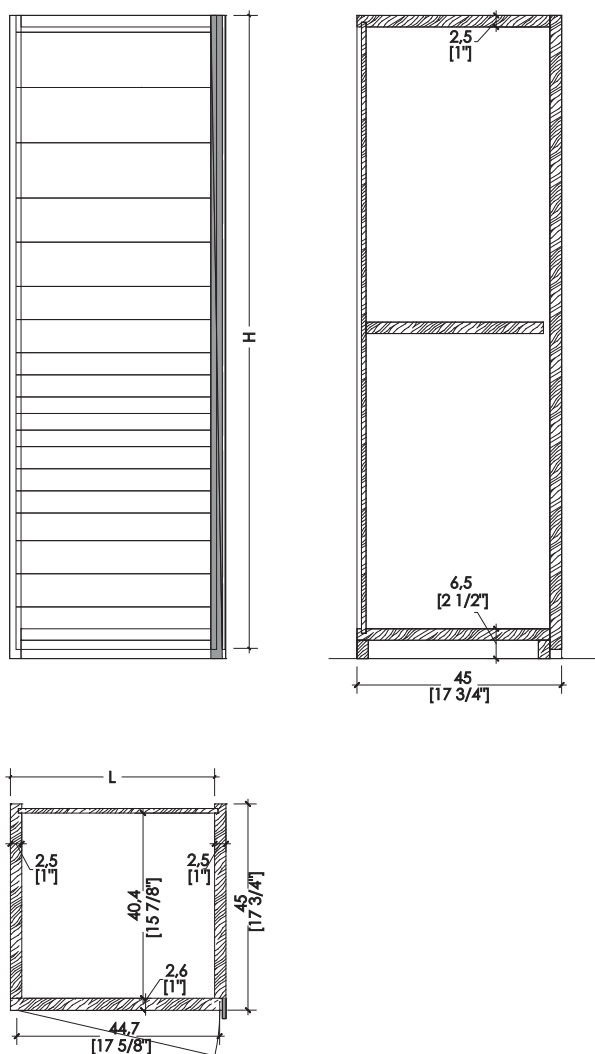
element for hanging unit



-Dimensions in centimeters and inches.
The right to discontinue and make changes is reserved.
This information is based on the latest product information available at the time of printing.

_dimensions

element for high storage unit



-Dimensions in centimeters and inches.
The right to discontinue and make changes is reserved.
This information is based on the latest product information available at the time of printing.

_materials & finishes



Black Iron "Genere"



Polished Steel



Burnished brass



Satin brass



Satin copper



Burnished copper

The finishes shown are indicative and refer to the entire production range.
Laurameroni reserves the right to modify the range without warning.

_maintenance

METAL

Natural deviations in structure and colour of metals are part of the authenticity of this surface and are typical of the goods. The surface is specially hand-crafted in several complex manufacturing steps. At the end of the galvanic procedure, the surface is painted with a transparent protective lacquer which prevents further oxidising and discolouring. Differences in colour and structure are not faults, but typical of the goods, and are characteristics of manual processing: every piece is unique. For cleaning and maintenance do not use any acid, solvents or alkali-based cleaners. Do not use scouring agents, steel wool, pot cleaners or similar. Pointed or sharp objects, such as blades or knives, can damage the surface. Anything hot or damp can also be detrimental to the surface. Remove light soiling with a soft cloth and a neutral household cleaning product diluted in water. Clean the metal parts with cold or hand-hot water and finish by immediately drying with a soft cloth.

Le deviazioni naturali nella struttura e nel colore dei metalli fanno parte dell'autenticità di questa superficie e sono tipiche dei prodotti. La superficie è appositamente realizzata a mano in diverse fasi di produzione complesse. Al termine della procedura galvanica, la superficie viene verniciata con una vernice protettiva trasparente che impedisce ulteriore ossidazione e scolorimento. Le differenze di colore e struttura non sono difetti, ma tipici dei prodotti e sono caratteristiche della lavorazione manuale: ogni pezzo è unico. Per la pulizia e manutenzione non utilizzare detergenti acidi, solventi o alcali. Non usare agenti abrasivi, lana d'acciaio, detergenti per pentole o simili. Oggetti appuntiti o taglienti, come lame o coltelli, possono danneggiare la superficie. Qualsiasi cosa calda o umida può anche essere dannosa per la superficie. Rimuovere lo sporco leggero con un panno morbido e un prodotto per la pulizia neutro della casa diluito in acqua. Pulire le parti metalliche con acqua fredda o calda a mano e finire asciugando immediatamente con un panno morbido.

**BEDIF
FEREN
TBEUN
IQUE.**

LAURAMERONI s.r.l.
22040 Alzate Brianza (Como)
Via Manzoni, 2784
T +39 031 761450
info@laurameroni.com
www.laurameroni.com