

## Tango - Tango collection

design Bartoli Design



Set of cylindrical containers with a diameter of cm. 50 and realized in three heights. The multicoloured "Lacca" finish was created exclusively for Laurameroni and the colours are available from the collection.

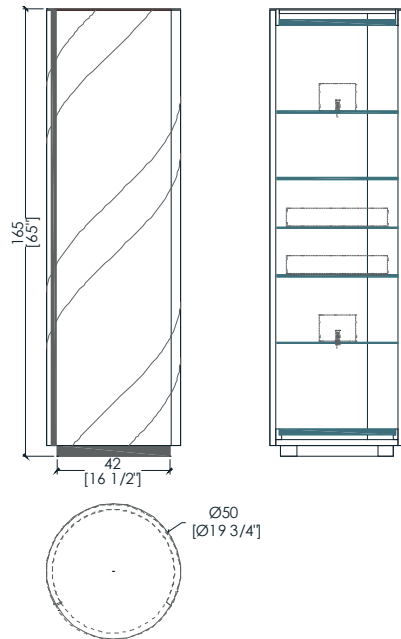
"Tango" is a set of containers born from the research on the counterpoint of proportions, diagonals and volumes. The two rhythms of helical bands that surround the cylinders are inspired by the mooring poles of the boats on Lake Como. The containers enclose an internal organization in circular glass tops, with mirror-polished steel accessories that multiply the geometries in a game of reflections.

Tris di contenitori cilindrici con diametro da cm. 50 e proposti in tre altezze. La finitura "Lacca" multicolore è stata creata appositamente in esclusiva per Laurameroni e i colori sono disponibili a campionario.

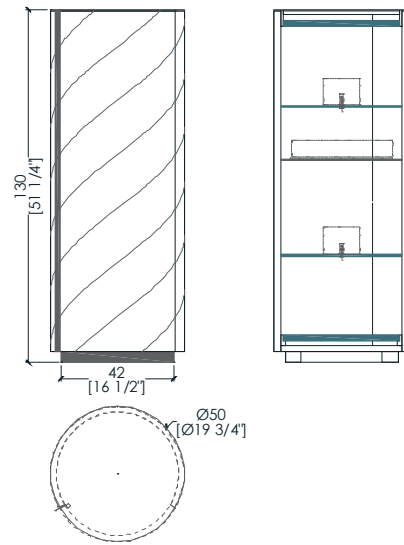
"Tango" è un tris di contenitori nati dalla ricerca sul contrappunto di proporzioni, diagonali e volumi. I due ritmi di fasce elicoidali che avvolgono i cilindri sono ispirati dalle paline di ormeggio delle barche sul lago di Como. I contenitori racchiudono un'organizzazione interna a piani circolari in vetro, con accessori in acciaio lucidato a specchio che moltiplicano le geometrie in un gioco di riflessi.

\_dimensions

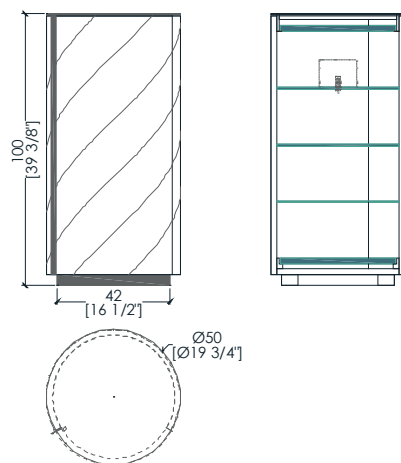
TA 165 high totem - totem alto -  
totem hoch - totem haut - Тотем высокий



TA 130 high totem - totem alto -  
totem hoch - totem haut - Тотем высокий



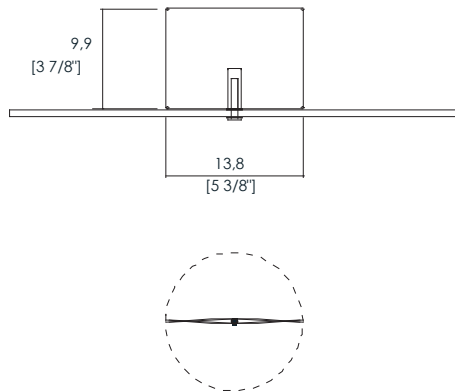
TA 130 high totem - totem alto -  
totem hoch - totem haut - Тотем высокий



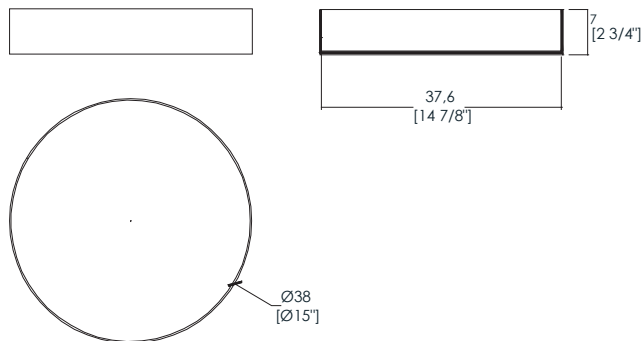
\_Dimensions in millimeters and inches.  
The right to discontinue and make changes is reserved.  
This information is based on the latest product information available at the time of printing.

\_dimensions

rotating partition - divisorio girevole -  
drehbare trennwand - diviseur tournant - Поворотный разделитель



tray - vassoio -  
schale - plateau - Лоток



**Dimensions in millimeters and inches.**  
**The right to discontinue and make changes is reserved.**  
**This information is based on the latest product information available at the time of printing.**

\_materials & finishes

lacca 61



Lacca Corallo



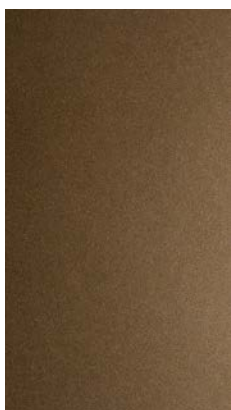
Lacca Amaranto



Lacca Lampone



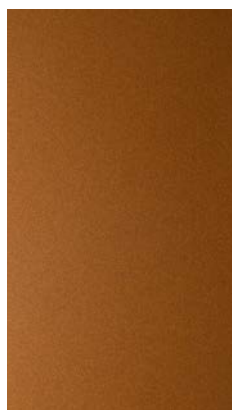
Lacca Lavanda



Lacca Bronzo



Lacca Malva



Lacca Odra



Lacca Orange



Lacca Bosco



Lacca Sabbia

\_The finishes shown are indicative and refer to the entire production range.  
Laurameroni reserves the right to modify the range without warning.

\_materials & finishes

brushed matt lacquered



Brushed matt lacquered



Available in all  
RAL / NCS colors

\_The finishes shown are indicative and refer to the entire production range.  
Laurameroni reserves the right to modify the range without warning.

\_maintenance

**SPECIAL FINISHES**

**Do not use acid or alkali-based cleaners. Do not use scouring agents, steel wool, pot cleaners or similar. Do not use solvents to clean painted surfaces. Pointed or sharp objects, such as blades or knives, can damage (scratch) the surface. Anything hot or damp will cause damage to the surface. Clean painted surfaces with a clean, soft, lint-free cloth to avoid abrasion with particles of dirt. For soft-finish paint surfaces, use a soft, lint-free, slightly damp cloth. If heavily soiled, paint surfaces can be cleaned more easily with a neutral (silicone-free) cleaning agent. Do not use furniture polish or other care products to clean soft-finish paint surfaces. It is then essential to rub the surface dry, so that there is no residual moisture. Clean painted surfaces regularly with a soft, lint-free cloth to remove dust**

Non utilizzare detergenti acidi o alcali. Non usare agenti abrasivi, lana d'acciaio, detergenti per pentole o simili. Non usare solventi per pulire le superfici verniciate. Oggetti appuntiti o taglienti, come lame o coltelli, possono danneggiare (graffiare) la superficie. Qualsiasi cosa calda o umida causerà danni alla superficie. Pulire le superfici verniciate con un panno pulito, morbido e privo di lanugine per evitare l'abrasione con particelle di sporco. Per superfici di vernice con finitura morbida, utilizzare un panno morbido, privo di lanugine e leggermente umido. Se molto sporchi, le superfici verniciate possono essere pulite più facilmente con un detergente neutro (privo di silicone). Non utilizzare lucidi per mobili o altri prodotti per la cura per pulire le superfici di vernice. È quindi essenziale strofinare delicatamente la superficie asciutta, in modo che non vi sia umidità residua. Pulire regolarmente le superfici verniciate con un panno morbido e privo di lanugine per rimuovere la polvere.

**BEDIF  
FEREN  
TBEUN  
IQUE.**

LAURAMERONI s.r.l.  
22040 Alzate Brianza (Como)  
Via Manzoni, 2784  
T +39 031 761450  
info@laurameroni.com  
www.laurameroni.com